

BUY NOW - ONLINE!

www.cromwell.co.uk

SECURE ONLINE PAYMENT



Over
64,600
Items

2011
Edition



Serving Industry
for over 40 Years



CROMWELL®

The **INDUSTRIAL
SUPPLIES** Company

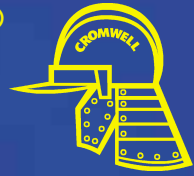


EVERY PRODUCT, EVERY BRAND, ONE SUPPLIER!™



CROMWELL®

www.cromwell.co.uk



Commitment to Customer Service "Our Goal is to Help You Achieve Yours"



Quality Product "Traceability"

Cromwell has complete **ISO9001** accreditation, every branch is individually certified and has fully trained quality assurance staff.

Power Tools Service & Repair

We offer a high quality in-house repair service on all major brands of air and electric power tools. Please contact your local Cromwell for us to collect your tooling for repair and speedy service.

Also see page 1831



Precision Tools Calibration & Repair

Our own purpose-built facility provides a fully accredited **UKAS** calibration laboratory. We also provide a repair service. This well established division has a comprehensive stock of spares for precision tools and gauging equipment, this ensures a quick service on all major manufacturers products.

Also see pages 1828 - 1830



Product Support Time Served Engineers

Product and application advice is available from all of our branches throughout the UK. The local Engineers have further support from our specialist technical division and application engineers based in Leicester, who provide advice, training, CAD design, tooling packages and R&D to suit your special requirements.

Also see page 1827



Contents

Pages

Catalogue Overview	2 - 3
Ordering & Payment	4 - 5
Company Profile	6 - 13
Branch Locations	14 - 15
Alphabetical Index	16 - 29
Service & Support	1825
Product Vending & Inventory Control	1832 - 1839

Catalogue Overview

To ensure that users can find the right product as quickly as possible all products have been catalogued in order of “**Product Group**” sequence. The “**Groups**” featured on each page are clearly identified in the outside corner at the top of each page.

Furthermore, a complete list of the “**Groups**” featured in each of the 10 sections of this catalogue is given on the “**Section Contents Page**” at the front of each section.

The page numbers of the “**Section Contents Pages**” are shown in the “**Catalogue Overview**” given below and right.

And don't forget we have also included a very useful “**Alphabetical Index**” on pages 16 - 29.

Product Group



Section Contents Page

Cutting Tools

Section 1

Product Groups
005 - 177

See Page 31 for Contents



Abrasives & Power Tools

Section 2

Product Groups
200 - 298

See Page 345 for Contents



Precision & Laboratory Equipment

Section 3

Product Groups
300 - 385

See Page 589 for Contents



Workshop Equipment

Section 4

Product Groups
400 - 495

See Page 675 for Contents



Hand Tools

Section 5

Product Groups
501 - 603

See Page 773 for Contents



Fasteners, Bearings & Transmissions

Section 6

Product Groups
600 - 690

See Page 1137 for Contents



Lubricants & Chemical Products

Section 7

Product Groups
708 - 780

See Page 1221 for Contents



Office Supplies & Stationery

Section 8

Product Groups
787 - 849

See Page 1321 for Contents



Welding

Section 9

Product Groups
860 - 891

See Page 1437 for Contents



Maintenance & Personal Protection

Section 10

Product Groups
904 - 996

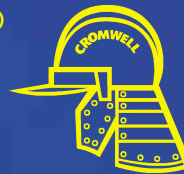
See Page 1487 for Contents





CROMWELL®

www.cromwell.co.uk



Product Grading

Cromwell offers a wide range of industrial quality products. An excellent choice of brands, qualities and prices to suit all applications. To help people identify the relevant quality they require we have used the following logos throughout this catalogue to "Grade" each product.



Production

High performance industrial tooling designed for continuous use applications on machine tools where repeatability and long tool life are of critical importance.



Workshop

Standard quality tooling for use by tradesmen and general industrial use.



Professional

Industrial tooling that has enhanced features and benefits demanded by craftsmen and professional users.



Maintenance

Products designed for general maintenance of machines, workshops, garages and some household applications.



Industrial

Designed for regular use in industrial applications. Manufactured to stringent quality levels and international standards.



Home Improver

DIY quality tooling. Designed for home use and light applications.

How to Order

When choosing products from our catalogue, please select the "Order Codes" by following the example shown here.

1. Note the six figure "Product Group" code

Number of Pieces	Weight	Order Code	List Price/1	Offer Price/1
6	620g	KEN-020	-	-
		-1160K		

2. Add the remaining five figure "Item" code

Now with your complete Order Code, simply add your desired quantity and our friendly and experienced sales team are ready to take your order.

e.g. Order Code: **KEN-020-1160K**
Quantity: **1**

Telephone

See pages 14 - 15 for local branch details

7.30am to 5.15pm

Monday - Thursday (7.30am - 4.15pm Friday)

8.00am to 11.30am Saturday morning

NB. Local times may vary, please speak to our experienced and helpful sales staff who will assist you with your orders and enquiries.

Online/Fax/e-mail

We are always ready to receive orders and enquiries that we promise to deal with promptly, efficiently and with care.

24 hours
a day - 7 days
a week

BUY NOW - ONLINE!
www.cromwell.co.uk
SECURE ONLINE PAYMENT
Over 64,600 Items

EDI/E-commerce

Cromwell has developed a managed solution to receive and process industry standard EDI and Web Procurement messages as well as customer specific solutions (by arrangement).



Daily Delivery



Collection

8.00am to 5.15pm

Monday - Thursday (8.00am - 4.00pm Friday)

8.00am to 11.00am

Saturday morning

Call in to any of our Trade Counters where our experienced and friendly staff will assist you, promptly and efficiently. Orders received in advance will be picked and ready for your immediate collection!

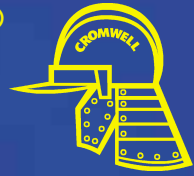
Ex-Works

As part of our overall service provision we supply 'non catalogued' items, such as machine tools and office furniture, as well as special tooling, made to order. Manufacturer's minimum order values, delivery times and carriage may be applied.



CROMWELL®

www.cromwell.co.uk



How to Pay

"Which Method is Best for You"

Cash & Cheques

Cash purchases are welcome at all of our Branches. All recognised Bank and Building Society cheques, if accompanied with the relevant guarantee card are accepted.

Credit Card

All major credit/debit cards are accepted.



Corporate Purchase Cards

By arrangement.



Credit Account

If you supply us with details of your company and a letterhead showing your registration number, we can quickly supply you with a 30-day credit account, subject to your company's credit status. Payments accepted as above, also by Bankers Draft and BACS.

Pricing - Quality Industrial Supplies at Very Competitive Prices

List Prices All list prices are those given by the manufacturers and suppliers and exclude VAT, quotes remain valid for 30 days only, unless by written agreement and are subject to change in line with manufacturers pricing policies.

Offer Prices Discounted offer prices are printed in our catalogue and are available to all our customers and may be subject to change in line with increased costs.

Contract Prices Special selling prices can be negotiated for volume quantities of specific products where we can pass on savings made from high volume production.

Discounts Account customers can negotiate purchase discounts on products where they have a regular or high volume usage. Discount levels are subject to agreement with local branch sales staff or management and are relevant to volumes being purchased.

Cancellation & Return Policy

Cancellations

Orders cannot be cancelled once they have been despatched by Cromwell or one of its suppliers. For products requiring special manufacture, cancellation will not generally be allowed once the manufacturing process has commenced.

Returns

Products may be returned to Cromwell for credit or refund by way of the following procedure;

- 1 A returns number or authorisation should be obtained from Cromwell prior to returning goods, advice note or invoice number needs to be quoted.
- 2 Products must always be returned unused in their original packaging and in a condition that is immediately fit for resale.
- 3 Returns must be made within 14 days of the advice note date of delivery unless special authorisation has been agreed.

Conditions

- (i) A re-stocking charge will generally be applied for products that are no longer required or returned due to customer error.
- (ii) Certificated/calibrated products may not be eligible for return due to conformity regulations included in our accreditation certification.
- (iii) Cromwell reserves the right to refuse to accept any products or to apply a re-stocking charge that relates to the actual cost of inspection and re-stocking for products returned that do not comply with the terms of this policy.

This policy excludes software products and/or products supplied under contract where the terms and conditions of the contract will rule. This policy is part of our terms and conditions of sale but does not affect the customer's statutory rights as a consumer. Cromwell accepts no responsibility for any loss or damage to products in transit.

ALL RETURNS ARE SUBJECT TO 100% INSPECTION BEFORE RE-STOCKING TO ENSURE GOODS ARE FIT FOR RESALE.

Product Promotions

Special Offers are published regularly to pass on substantial savings on products that Cromwell have purchased in volume, leaflets are freely available from your local branch or representative.

PRICES ARE CORRECT AT TIME OF PRINTING

Please contact us for latest pricing and details of our product promotions

PRICES RULE AT THE DATE OF DESPATCH

Cromwell's 400,000 sq ft Head Office and World Distribution Centre (WDC).



History - Serving Industry Since 1970

Cromwell was founded by Michael Gregory when he opened the first Cromwell premises in Wilberforce Road, Leicester, on the 1st August 1970 and with the effort, support and dedication of many people, he has since steered the company through its carefully managed expansion programme along to the present day.

Cromwell is now the largest British owned industrial distributor and has over 1,700 employees. The company is unique in having: 60 Distribution Centres Worldwide - 4 specialist companies and an export division operating in 44 countries and 5 continents - a team of "time-served" sales engineers in each region - global product research - product analysis unit - a team studying production methods worldwide; a unique daily

inter-company delivery system enabling rapid access to products, services and information.

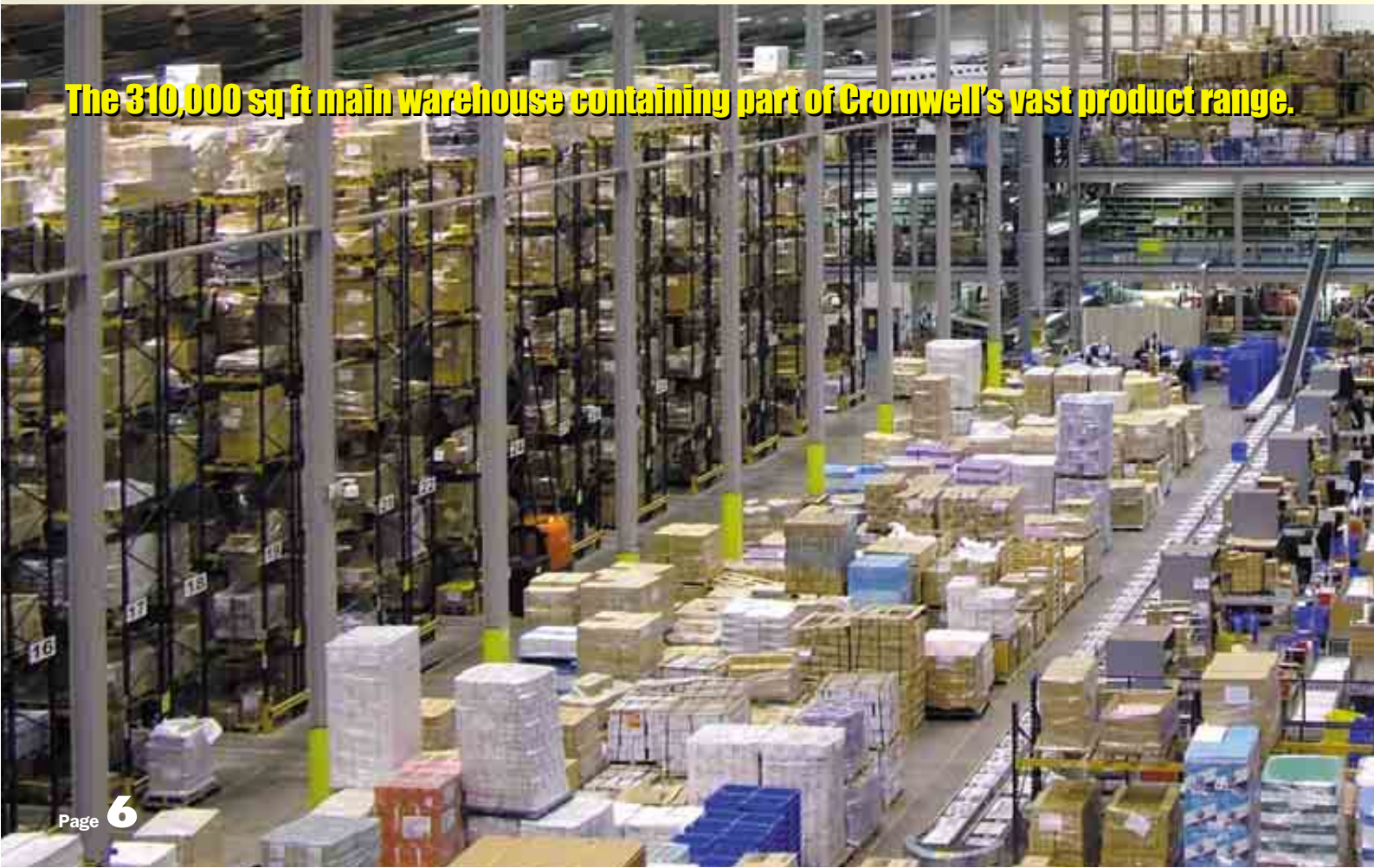
Cromwell people are totally committed to working closely with every customer and supplier, for the benefit of all. The development of products and training of people, creating the opportunities that are the foundation of our Company's success and growth - these positive contributions are part of the long term success and future security of Cromwell and its people.

Cromwell's comprehensive £20.5 million of local stocks are further supported by over £25.3 million of stock held in our central stores and World Distribution Centre (WDC) at Wigston, Leicester, UK.

Our Prime Objective is to be...

"The Complete Industrial Supply Company"

The 310,000 sq ft main warehouse containing part of Cromwell's vast product range.





CROMWELL®

www.cromwell.co.uk

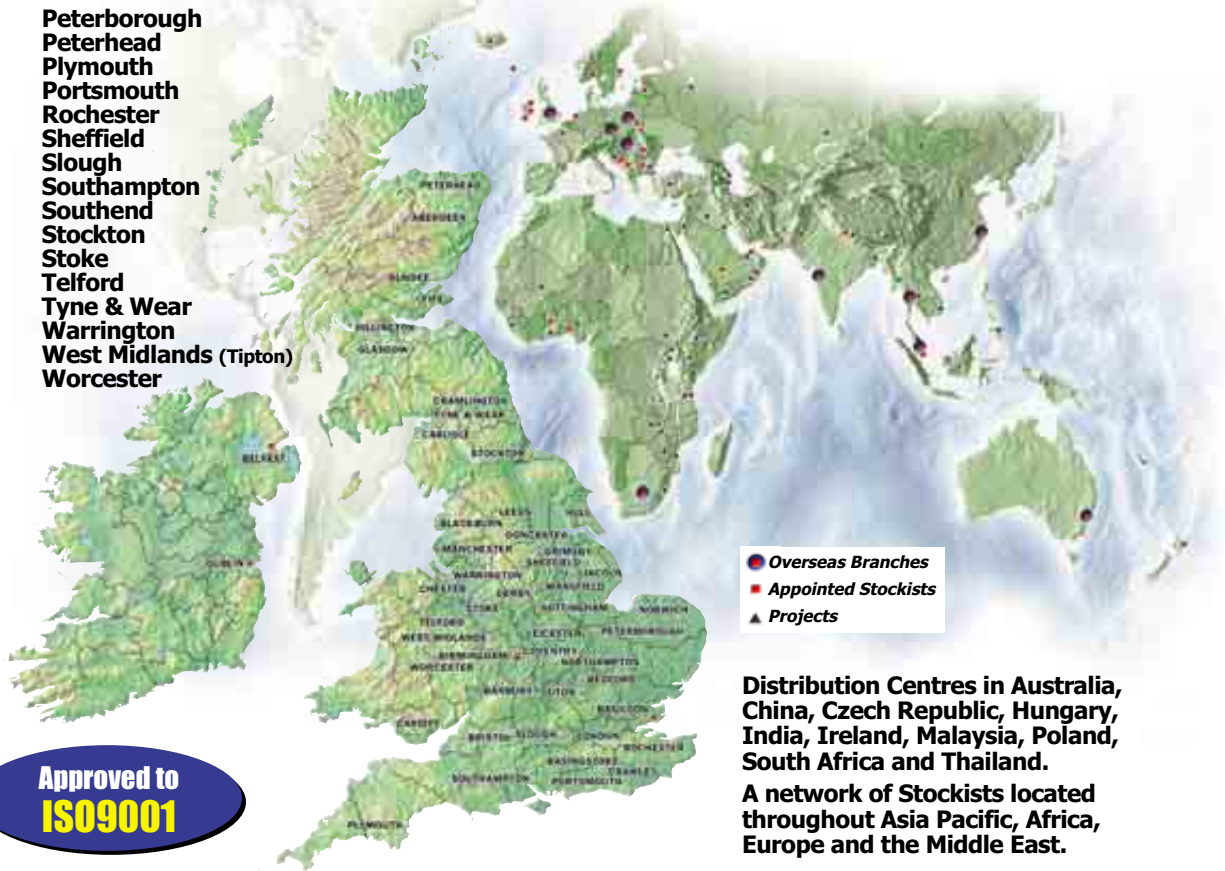


Experience - Local, National & Global Supply Capabilities

50 Locations:

- Aberdeen
- Banbury
- Basildon
- Basingstoke
- Bedford
- Birmingham
- Blackburn
- Bristol
- Cardiff
- Carlisle
- Chester
- Coventry (Binley)
- Coventry (Holbrook)
- Cramlington
- Crawley
- Derby
- Doncaster
- Dublin
- Dundee
- Fife
- Glasgow (Bellshill)
- Glasgow (Hillington)
- Grimsby
- Hull
- Leeds
- Leicester
- Lincoln
- London
- Luton
- Manchester
- Mansfield
- Northampton
- Norwich
- Nottingham

- Peterborough
- Peterhead
- Plymouth
- Portsmouth
- Rochester
- Sheffield
- Slough
- Southampton
- Southend
- Stockton
- Stoke
- Telford
- Tyne & Wear
- Warrington
- West Midlands (Tipton)
- Worcester



Approved to
ISO9001

Distribution Centres in Australia, China, Czech Republic, Hungary, India, Ireland, Malaysia, Poland, South Africa and Thailand.

A network of Stockists located throughout Asia Pacific, Africa, Europe and the Middle East.



Over 40 Years of Caring Service

“Cromwell is totally committed to provide it's people with opportunities to achieve their chosen ambitions, and our company aims to provide secure, enjoyable and meaningful employment for all our people.”
(1970)

“Our aim is to remain a multi-cultural company and promote equal opportunities. Cromwell will continue to be a reliable supply company whose primary objective is to provide quality products, effective support and 'added value' services to all its customers.”
(2011)

Michael Gregory
(Group Managing Director)

Michael Kerins
(Managing Director)

34,790 Customers - 316,500 Line Items Processed Every Week



Cromwell transact in excess of 316,500 line items every week, we are always ready to receive enquiries and orders which we promise to deal with promptly and efficiently. These will be handled carefully by Telesales Advisors, Representatives and Engineers, ensuring that **ALL** our Customers receive...

*...the Right Product,
...at the Right Time,
...at the Right Price!*

**We offer a wide choice
of ordering methods**

Telephone
www.cromwell.co.uk
Fax/e-mail
EDI



Choice - We Sell & Support 240,000 Items from £45.8 Million of Stock

Product selection is made easier by our regularly produced technical catalogues, showing a wide choice of well-known brands to enable the customer to select the most suitable product for the application.

We also provide a first class support service, covering:

Welding

Gas, Arc, Tig, Mig, Spot.

Measuring Equipment

Mechanical & Non-Mechanical Gauges, Test Gauges, Optical Equipment, Inspection, Workholding.

PPE

Eye, Hand, Head, Body, Foot, Hearing & Respiratory Protection, Paper Products, Cleaning Materials and Janitorial.

Cutting Tools

Drilling, Milling, Turning, Reaming,



Grooving, Threading, Die & Mould, Workholding.

Abrasives

Filing, Deburring, Descaling, Sanding, Cutting & Grinding, Finishing & Polishing.

Power Tools

Air Tools & Fittings, Electric & Cordless Tools, Accessories & Attachments.

Hand Tools

Construction, Automotive, Woodworking, Engineers, Garden, Storage Equipment.

MRO-Maintenance

Lubrication, Bearings, Motors, Transmissions, Pneumatics, Fasteners.

Tooling Packages

Complete Tooling Packages including Cutting Tools, Work Holding, Adaptors and Back End Tooling.

CAD

Highly skilled AUTOCAD operators for tool design and layouts, Tool Modifications, Fixtures, Gauges, etc.

Technical Advice

We provide Speed & Feed Recommendations, Material Data, Insert Conversions, Product Training Days, Work-outs.

Flexible Service - Customised and Personalised

Our **Caring People** are waiting to provide whatever service level you require. Fully trained **Telesales Teams** waiting to take your order.

Warehouse and Despatch personnel able to transact and deliver in a timely

manner that suits you.

Sales Representatives and **Qualified Engineers** are available for face to face contact that helps build trust and long term relationships.

Local Supply Depots offering wide

ranges of product from stock for **Same and Next Day Delivery or Collection** from any one of our **Trade Counters**. Along with our **Van Sales** operation which brings product and technical know-how right to your door.



National Distribution - Caring Local Service



All products are double checked at picking and packing, then despatched direct to our customers through our **overnight National Logistics Network UK.**

Calibration Laboratory - UKAS Accredited



Our Laboratory is **UKAS** accredited for the calibration of a range of precision equipment including: Torque Wrenches, Surface Plates and Tables, Micrometers, Calipers, Height Gauges, Ring Gauges, Plug Gauges, Screw Gauges, Rules, Squares, Dial Gauges, Protractors and Digital products. Gauge Recall Service also available.

Laboratory is fully compliant with **ISO/IEC 17025** Standard.



Power Tool & Gauge Repair Workshops

Precision Tools, Dial Gauges, Electric and Air Power Tools Repair Workshops

High quality repairs on most brands. Ex-stock spares available for most models. Tool collection service.



Track Side & Line Side Delivery of Components and Parts



Why walk to the stores when the stores can come to you?

Point of use delivery saves time and money for all.

Assembly time is valuable time.

Deliveries direct to the user not the stores.

Production Time



Waiting Time

Supply Systems - Product Vending and Inventory Management

IMS 365
SUPPLY SYSTEMS

Online management of consolidated stock/customer managed inventory.

Unlimited inventory profile.

On line replenishment min/max reports.

Consolidated usage and max liability reports.

Complete view and audit trail in vending mc's, cabinets or stores.

Management by exception reporting.

Automation of all stock transactions via the database.

Online electronic invoices.

Third party software interfaces (SAP, Oracle, JD Edwards, etc.)



VENDA 365
SUPPLY SYSTEMS



Advanced Stores & Product Management Systems

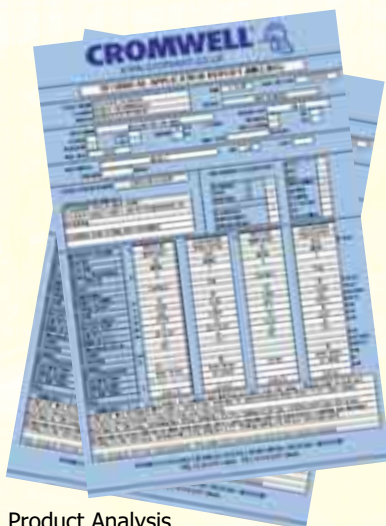
Dedicated and experienced Industrial Supply Systems Team - to advise and assist.

Unique solutions to inventory control. Product security and user accountability 24-Hour, 365 day availability at point of use.

Automated product vending system and advanced tool management systems manage both new and reusable products. Swipe card technology. All types of product handled. Economical to operate. 24 Hour Support Line.



Supply Chain Management - Procurement Initiatives



Product Analysis

- ✓ Trading partnerships
- ✓ Vendor reduction
- ✓ Total costing analysis
- ✓ Stores management
- ✓ Product usage monitoring
- ✓ Technical product evaluation
- ✓ Product suitability assessment
- ✓ Customised and Customer Specific Stock Control
- ✓ Supply Systems Integration Facilities
- ✓ Management Reporting
- ✓ Bar Coding

Let us assist you to reduce "the true, total cost to purchase".

True cost reduction analysis.
When did you last do it?
We can assist!



Electronic Proof of Delivery



Tracking & Inventory Control

Global Sourcing of Manufactured Products:

- Injection Moulded** **CNC Machined**
- Drop Forged** **Casted**
- Fabrication** **Woodworking**
- Textiles** **Electronics**

Sourcepoint was established to help customers of Cromwell source more competitively. Access to a global supply base helps reduce cost and improve product availability, with established sources across **Europe, North and South America, Central and Eastern Asia, Australasia and South Africa.**

Our presence as both a global supplier and purchaser brings knowledge and experience when finding new sources around the world, from identification through to product inspection.

Enquiries for all types of component, product or material will be considered. We have understanding of most production methods and legislation including **RoHS** and **REACH**, as well as a **UKAS** accredited calibration laboratory.

This new business can be combined with our regular shipments from around the globe to reduce costs. Our local network of contacts and partners can also buy products on our behalf with further knowledge at a ground level.

Global Products To Your Door



e-commerce - Maximise the Power of the Internet

B2C Business to Consumer



Self selection and ordering capabilities. On-line quotations for special product requests. Stock interrogation facilities available. Copies of documents, advice notes and invoices. Management reporting capabilities. Trade electronically and save time and money.

B2B Business to Business (e-sales)



Secure login, to view own pricing. Individual user configuration. Customers own administrator. Complete budgetary controls. On line sales and invoice history. Individual user shopping lists. Standard and draft order functionality.

Punch-out/Round trip

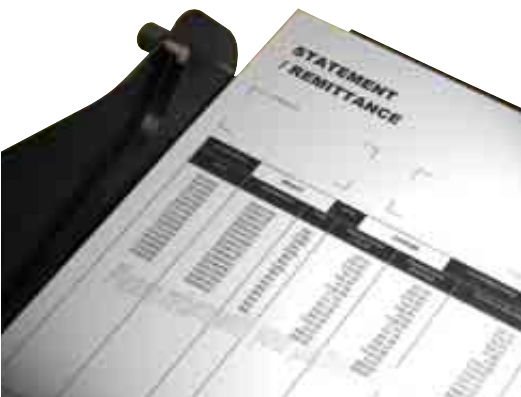
Use market sites and own business system. Auto generates PO on customers system. Send PO using FTP, email, CXML etc, auto generates Sales Order.



Global Communications

Voice and Data between all locations. Computerised facilities all linked Locally, Nationally and Globally.

Payment & Invoicing - Flexible Choice of Methods



Please advise our staff of the invoice method that matches your needs.

You choose the method:

- Daily invoices.
- Weekly invoices.
- Monthly invoices.
- Invoice per order number.
- Invoice by job number.
- Invoice by cost centre.
- Invoice per manufacturing cell.
- Head office accounting.
- Local plant accounting.
- Self billing invoices.

Simply what suits you!



Cash sale invoices can be issued at point of sale or when payment is made by cash/cheque or any major credit card.

You choose payment method:

- by **cheque at the point-of-sale.**
- by **cheque on a monthly basis.**
- by **normal credit/debit card.**
- by **corporate credit card.**
- by **cash at the point-of-sale.**
- by **BACS transfer system.**

Cromwell can accept any payment method through a single account, giving full visibility of purchases.

CROMWELL[®]

INTERNATIONAL



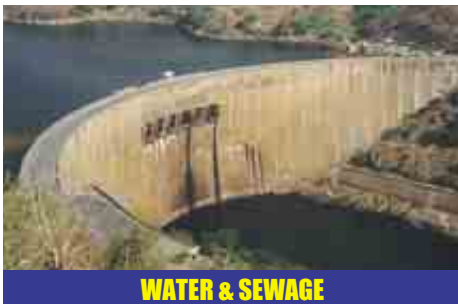
AVIATION



OIL FIELD SUPPLIES



AUTOMOTIVE



WATER & SEWAGE



METALWORK



MOBILE WORKSHOPS



SCHOOLS & UNIVERSITIES



ELECTRICAL & LABORATORY EQUIPMENT



VOCATIONAL TRAINING

Projects Division

- Specialists in turnkey projects worldwide.
- Teams of dedicated project engineers.
- Installation, commissioning and on site or supplier based training.
- Full 'in-house' packing facilities and in-house shipping department.
- Competent in all export documentation and procedures.

Customer Base Includes

- International funding agencies and governmental organisations.
- Vocational training and education (from primary to university level).
- Aid and relief agencies.
- Government Ministries for, utilities (electricity, gas, water and sewage, etc.), education, health, construction, transport, mining, oil and chemical industries.
- Approved supplier to the United Nations, World Banks, Crown Agents, Red Cross, Red Crescent, Oxfam and many other internationally recognised organisations.

Scope of Supply

- Hand, power and cutting tools.
- Metalworking/woodworking machinery.
- Education and vocational training equipment.
- Electrical installation and test equipment.
- Automotive and garage equipment.
- Custom built mobile workshops.
- Laboratory equipment.
- Construction equipment.
- Agricultural equipment.
- Emergency aid relief products.

Assistance in project design and development, drawing up equipment lists and training plans. Installation and commissioning of equipment supplied. Project finance may be available, subject to specific requirements.

Territories are supported by a network of field representatives supported by regular visits from a Project Manager ensuring a high level of liaison allowing the parties to build an in-depth knowledge of the territory, project and its needs.



Worldwide Distribution Network

Cromwell is one of the world's leading providers of Industrial Supplies and equipment. We have an extensive industrial supplies product range that includes hand tools, cutting tools, power tools, abrasives, measuring equipment, garages, workshop equipment, fasteners, general hardware, maintenance products, personal protection, welding, office supplies and ancillary equipment. This is made available to our customers through a **Worldwide Distribution Network** that has ex-stock availability of our products for supply direct into the local industry through our dealer network.

- Our Head Office and World Distribution Centre (WDC) based in the UK, supplies and supports Distribution Centres in Australia, China, Czech Republic, Hungary, India, Ireland, Malaysia, Poland, South Africa and Thailand.
- A network of dealers/stockists located throughout Asia Pacific, Africa, Europe and the Middle East.
- Customised catalogues to suit local market requirements, priced in local currency.



- Overseas Branches
- Appointed Stockists
- ▲ Projects

UK HEAD OFFICE & WDC

CZECH REPUBLIC

POLAND

HUNGARY

SOUTH AFRICA

INDIA

AUSTRALIA

CHINA

THAILAND

APPOINTED STOCKISTS			
Algeria	France	Kosova	Saudi Arabia
Azerbaijan	Germany	Latvia	Singapore
Bosnia & Herzegovina	Ghana	Nepal	Spain
Botswana	Holland	New Zealand	Sweden
Belgium	Iceland	Nigeria	Tanzania
Bulgaria	Indonesia	Norway	U.A.E.
Egypt	Ireland	Oman	Uganda
Ethiopia	Jordan	Qatar	Yemen
Faroe Islands	Kenya	Romania	Zambia

PROJECTS			
Afghanistan	Ghana	Mozambique	Tanzania
Azerbaijan	Indonesia	Myanmar	Thailand
Bangladesh	Iran	Nepal	Trinidad & Tobago
Bosnia & Herzegovina	Iraq	Nigeria	U.A.E.
Bulgaria	Jordan	Oman	Uganda
Caribbean	Kazakhstan	Pakistan	Vanuatu
Egypt	Kenya	Philippines	Vietnam
Ecuador	Kuwait	Russia	Yemen
Estonia	Libya	Sierra Leone	Zambia
Ethiopia	Malaysia	Sri Lanka	Zimbabwe
F.Y.R.	Mali	Sudan	
	Mongolia	Swaziland	

© BP p.l.c.





CROMWELL®

www.cromwell.co.uk



Branch Locations

Call in at any of our **Nationwide Branch Trade Counters** where our experienced and friendly staff will assist you, promptly and efficiently. Orders received in advance will be picked and ready for your immediate collection!



Cromwell Cramlington's Trade Counter/Showroom Area



Cromwell Bedford's Trade Counter

Opening Times

7.30am to 5.15pm Monday - Thursday
(7.30am - 4.15pm Friday)

8.00am to 11.30am Saturday morning

NB. Local times may vary, please speak to our experienced and helpful sales staff who will assist you with your orders and enquiries.



Cromwell Carlisle



Cromwell London

Electronic PDF Maps are available at www.cromwell.co.uk

UK HEAD OFFICE & WORLD DISTRIBUTION CENTRE (WDC)

65 Chartwell Drive, Wigston,
Leicester LE18 2FS
Tel: (0116) 288 8000
Fax: (0116) 288 8222
e-mail: hq@cromwell.co.uk

**HQ & World
Distribution Centre**

65 Chartwell Drive, Wigston,
Leicester. LE18 2FS
Tel: +44 (0)116 288 8000
Fax: +44 (0)116 288 8222
e-mail: hq@cromwell.co.uk

Aberdeen

Unit 2, Murcar Industrial Estate, Denmore
Road, Bridge of Don, Aberdeen.
AB23 8JW
Tel: 01224 820851 Fax: 01224 820877
e-mail: aberdeen@cromwell.co.uk

Banbury

Tel: 01295 271700 Fax: 01295 275888
e-mail: banbury@cromwell.co.uk

Basildon

Unit 22, Heronsgate Industrial Estate,
Paycocke Road, Basildon, Essex.
SS14 3EU
Tel: 01268 532555 Fax: 01268 289714
e-mail: basildon@cromwell.co.uk

Basingstoke

Unit 5, Sherrington Way, Off Lister Road,
Basingstoke. RG22 4DQ
Tel: 01256 355966 Fax: 01256 477230
e-mail: basingstoke@cromwell.co.uk

Bedford

Unit 11, Manton Centre, Manton Lane,
Bedford. MK41 7PX
Tel: 01234 716470 Fax: 01234 211214
e-mail: bedford@cromwell.co.uk

Birmingham

Chester House, 217 Chester Street, Aston,
Birmingham. B6 4AE
Tel: 0121 380 1700 Fax: 0121 380 1710
e-mail: birmingham@cromwell.co.uk

Blackburn

Unit 5, Centurion Park, Davyfield Road,
Blackburn. BB1 2QY
Tel: 01254 291580 Fax: 01254 291585
e-mail: blackburn@cromwell.co.uk

Bristol

St. Vincent's Trading Estate, Feeder Road,
Bristol. BS2 0UY
Tel: 0117 972 1127 Fax: 0117 972 4287
e-mail: bristol@cromwell.co.uk

Cardiff

3-4 Tollgate Close, Penarth Road,
Cardiff. CF11 8TN
Tel: 029 2034 5888 Fax: 029 2034 5777
e-mail: cardiff@cromwell.co.uk

Carlisle

11 Millbrook Road, Kingstown Industrial
Estate, Carlisle. CA3 0ET
Tel: 01228 633244 Fax: 01228 633249
e-mail: carlisle@cromwell.co.uk

Chester

29-31 Alvis Road, Engineer Park,
Sandycroft, Deeside. CH5 2QB
Tel: 01244 530400 Fax: 01244 532100
e-mail: chester@cromwell.co.uk

Coventry

27 Albion Industrial Estate, Endemere
Road, Coventry. CV6 5PY
Tel: 024 7666 4614 Fax: 024 7666 6667
e-mail: coventry@cromwell.co.uk

Cramlington

38 Colbourne Crescent, Nelson Park
Industrial Estate, Cramlington,
Northumberland. NE23 1WD
Tel: 01670 706800 Fax: 01670 706820
e-mail: cramlington@cromwell.co.uk

Crawley

Unit 2 Wallis Court, Fleming Way,
Crawley. RH10 9NY
Tel: 01293 540200 Fax: 01293 533611
e-mail: crawley@cromwell.co.uk

Derby

City Gate Business Park, 500 City Gate,
Derby. DE24 8WY
Tel: 01332 360660 Fax: 01332 204239
e-mail: derby@cromwell.co.uk

Doncaster

Ogden Road, Shaw Lane Industrial Estate,
Doncaster. DN2 4SQ
Tel: 01302 366600 Fax: 01302 327556
e-mail: doncaster@cromwell.co.uk

Dundee

Unit 1, Block 25, Kilspindie Road,
Dunsinane Industrial Estate, Dundee.
DD2 3QN
Tel: 01382 832013 Fax: 01382 832362
e-mail: dundee@cromwell.co.uk

Fife

Unit 4, Woodgate Way South, Eastfield Ind.
Est., Glenrothes, Fife. KY7 4PF
Tel: 01592 631632 Fax: 01592 631641
e-mail: fife@cromwell.co.uk

Glasgow (Bellshill)

Gorman House, Rheidig Industrial Estate,
Bellshill, Lanarkshire. ML4 3LU
Tel: 01698 746974 Fax: 01698 841988
e-mail: glasgow@cromwell.co.uk

Glasgow (Hillington)

9A Carlyle Avenue, Hillington Park,
Glasgow. G52 4XX
Tel: 0141 810 2550 Fax: 0141 810 2555
e-mail: hillington@cromwell.co.uk

Grimsby

Estate Road No 6, South Humberside Ind.
Estate, Grimsby, North East Lincs.
DN31 2TG
Tel: 01472 358741 Fax: 01472 241433
e-mail: grimsby@cromwell.co.uk

Hull

21 St. James Street, Hull. HU3 2DH
Tel: 01482 326999 Fax: 01482 213089
e-mail: hull@cromwell.co.uk

Leeds

Old Mill Business Park, Gibraltar Island
Road, Leeds. LS10 1RJ
Tel: 0113 277 7730 Fax: 0113 277 7724
e-mail: leeds@cromwell.co.uk

Leicester

Unit 5, 10 Chartwell Drive, Wigston,
Leicester. LE18 2FL
Tel: 0116 288 8444 Fax: 0116 288 1355
e-mail: leicester@cromwell.co.uk

Lincoln

Station Road, North Hykeham, Lincoln.
LN6 9AL
Tel: 01522 500888 Fax: 01522 500857
e-mail: lincoln@cromwell.co.uk

London

Unit 21-22, Muirhead Quay, Fresh Wharf,
Highbridge Road, Barking. IG11 7BG
Tel: 020 8477 4120 Fax: 020 8477 4121
e-mail: london@cromwell.co.uk

Luton

No.7 (Unit D), Bilton Way, Luton. LU1 1UU
Tel: 01582 484666 Fax: 01582 435158
e-mail: luton@cromwell.co.uk

Manchester

651 Eccles New Road, Salford,
Lancashire. M50 1BA
Tel: 0161 786 2500 Fax: 0161 787 7113
e-mail: manchester@cromwell.co.uk

Mansfield

Warren House, Junction Mills,
Kirkby Folly Road, Sutton-in-Ashfield,
Nottinghamshire. NG17 5HN
Tel: 01623 551616 Fax: 01623 552007
e-mail: mansfield@cromwell.co.uk

Northampton

No.1 Stour Road, Weedon Road Industrial
Estate, Northampton. NN5 5AA
Tel: 01604 752488 Fax: 01604 753815
e-mail: northampton@cromwell.co.uk

Norwich

2 Burnet Road, Sweetbriar Industrial Estate,
Norwich, Norfolk. NR3 2BS
Tel: 01603 409919 Fax: 01603 258900
e-mail: norwich@cromwell.co.uk

Nottingham

Units 14-16 Lilac Grove, Beeston,
Nottingham. NG9 1PF
Tel: 0115 922 3311 Fax: 0115 907 8855
e-mail: nottingham@cromwell.co.uk

Peterborough

Royce Road, Carr Road Industrial Estate,
Peterborough. PE1 5YB
Tel: 01733 555524 Fax: 01733 311103
e-mail: peterborough@cromwell.co.uk

Peterhead

Unit D, Blackhouse Industrial Estate,
Aberdeenshire. AB42 1BW
Tel: 01779 480410 Fax: 01779 481518
e-mail: peterhead@cromwell.co.uk

Plymouth

Cannon Mill Business Park,
Plymbridge Road, Plymouth. PL6 7JS
Tel: 01752 692 152 Fax: 01752 692 153
e-mail: plymouth@cromwell.co.uk

Portsmouth

Unit 15, Admirals Park, Williams Road,
Portsmouth. PO3 5NJ
Tel: 023 9266 8512 Fax: 023 9269 9179
e-mail: portsmouth@cromwell.co.uk

Rochester

Units 2 & 3 Gill's Court, Chaucer Close,
Medway City Estate, Anthony's Way,
Rochester, Kent. ME2 4DN
Tel: 01634 290586 Fax: 01634 290589
e-mail: rochester@cromwell.co.uk

Sheffield

Waverley House, Effingham St.,
Sheffield. S4 7YP
Tel: 0114 275 0631 Fax: 0114 275 4447
e-mail: sheffield@cromwell.co.uk

Slough

770 Buckingham Avenue, Slough Trading
Estate, Slough, Berkshire. SL1 4NL
Tel: 01753 696000 Fax: 01753 696966
e-mail: slough@cromwell.co.uk

Southampton

Second Avenue, Millbrook Trading Estate,
Southampton, Hants. SO15 0BS
Tel: 023 8070 4705 Fax: 023 8070 4018
e-mail: southampton@cromwell.co.uk

Stockton

Oliver House, Neville Road, North Tees
Industrial Estate, Stockton-on-Tees.
TS18 2RD
Tel: 01642 673605 Fax: 01642 671479
e-mail: stockton@cromwell.co.uk

Stoke

Unit B, Great Fenton Business Park, Grove
Road, Fenton, Stoke-on-Trent,
Staffordshire. ST4 4LE.
Tel: 01782 746746 Fax: 01782 414414
e-mail: stoke@cromwell.co.uk

Telford

Unit C3, Hortonwood 10, Telford. TF1 7ES
Tel: 01952 670098 Fax: 01952 603500
e-mail: telford@cromwell.co.uk

Tyne & Wear

Dukesway, Team Valley Trading Estate,
Gateshead, Tyne & Wear. NE11 OPE
Tel: 0191 487 3000 Fax: 0191 482 0946
e-mail: tyne&wear@cromwell.co.uk

Warrington

Unit 26, Gateway 49 Trade Park, Kerfoot
Street, Warrington. WA2 8NT
Tel: 01925 635466 Fax: 01925 650091
e-mail: warrington@cromwell.co.uk

West Midlands (Tipton)

Units B1/B2, Link One Industrial Park,
George Henry Road, Great Bridge, Tipton,
West Midlands. DY4 7BZ
Tel: 0870 850 0055 Fax: 0870 609 1532
e-mail: westmidlands@cromwell.co.uk

Worcester

67c Blackpole Trading Estate (West),
Blackpole, Worcester. WR3 8TJ
Tel: 01905 458778 Fax: 01905 754180
e-mail: worcester@cromwell.co.uk

Asia Pacific

Head Office: 3rd Floor No. 3, Alley 3,
Lane 257, Chi-Li Street, Shipai,
Taipei 112, Taiwan, R.O.C.
Tel: +886 (0)22 821 7934
Fax: +886 (0)22 826 1377

Australia - Sydney

Head Office: Cromwell PTY Limited,
Unit D4, 3-29 Birnie Avenue, Lidcombe,
Sydney. NSW 2141
Tel: +61 (02) 9395 1000
Fax: +61 (02) 9647 1222
e-mail: sales@cromwellpty.com.au

China - Shanghai

Head Office: Building No. 1, Gaosin City,
288 Fu Te North Road, Free Trade Zone,
Wai Gao Qiao, Pu Dong, Shanghai.
200131. Peoples Republic of China.
Tel: +86 (0)21 5866 4666
Fax: +86 (0)21 5866 5666
e-mail: sales@cromwell.cn

Czech Republic - Prague

Head Office: Cromwell Czech Republic
s.r.o. Nachodska 73,
193 00 Praha 9 - Horni Pocernice.
Tel: +420 281 927 744 - 7
Fax: +420 281 927 181
email: sales@cromwell.cz

Hungary - Budapest

Head Office: 1239 Budapest,
úcsai út 5.
Tel: +36 (0)1 2868 866
Fax: +36 (0)1 2868 877
e-mail: sales@cromwell.hu

India - Mumbai

Head Office: Cromwell Industrial Supplies
Pvt Ltd., C7, 8, 9, 16, 17, 18,
Rajlaxmi Commercial Complex,
Thane - Bhiwandi Road, Kalker,
Taluka Bhiwandi, District Thane,
Pin 421302, Maharashtra, India.
Tel: +91 (0)2522 649886 / 649887 /
646634
Fax: +91 (0)2522 277125
e-mail: sales@cromwell.co.in

Malaysia - Kuala Lumpur

Head Office: No. 11 & 11A, Jalan PJS
11/1, Bandar Sunway, 46150 Petaling
Jaya, Selangor, Darul Ehsan, Kuala
Lumpur, Malaysia.
Tel: +60 (0)3 5638 6666
Fax: +60 (0)3 5638 2020
e-mail: sales@cromwell.com.my

Poland - Warsaw

Head Office: Cromwell Sp. z o.o.
ul. Bodycha 97,
05-816 Michalowice-Reguly,
Warszawa, Poland.
Tel: +48 22 723 77 02
Fax: +48 22 723 3214
e-mail: sales@cromwell.pl

**South Africa -
Johannesburg**

Head Office: Unit 5 & 6, Pelican Park,
Malcolm Moodie Crescent, Jet Park 1469,
Johannesburg. P.O. Box 30137
Tel: +27 (0)11 397 6666/7
Fax: +27 (0)11 397 6668
e-mail: sales@cromwell.co.za

Thailand - Bangkok

Head Office: 2070 Moo 1,
Old Railway Road, Samrong Nua,
A. Mueng, Samutprakarn 10270, Thailand.
Tel: +66 (0) 2 743 5353
Fax: +66 (0) 2 743 5350
e-mail: info@cromwell.co.th

3D Axis Gauging	599
A	
Abrasive Bands	358
Belts	356 - 357
Cartridge Rolls	359
Cutting Discs	369 - 371
Flap Discs	366 - 367
Flap Wheels	368
Grinding Discs	366, 369 - 371
Grinding Wheels	373 - 375, 483
Hand Pads	379
Mounted Points	390 - 391, 483
Rolls	346 - 347
Sanding Discs	350 - 355, 360 - 361, 366 - 367, 381 - 385, 483, 548
Sheets	346 - 348, 353
Sponges	349, 379
Sticks	356
Absorbent Granules	1291
Access Barriers	1811 - 1813, 1815
Platforms	1517, 1528 - 1529, 1809
Ramps, Portable	1776
Towers	1528 - 1529
Accident Books	1821
Acidity & Alkalinity Meters	672
Activators & Primers, Adhesive	1243
Activators, Automatic Lubricant	1283
Adaptor Sleeves, Bearings	1196
Adaptors, Barrel	931
Face Mill	292 - 293, 299
ISO Taper	294
Jacobs Taper	294
Morse Taper	292, 294, 568
Plug	551
Shank	301, 739
Sidelock	292, 295, 299
Tapping	302 - 303
Address & Telephone Books	1328
Address Labels	1374, 1377
Adhesion Compound	1224
Adhesive Activators & Primers	1243
Foam Pads	1344
Sprays	1246, 1344
Spreaders	900
Tapes	1798
Adhesives, Carpet	1246
Epoxy	1222 - 1223
General Purpose	1344
Instant	1223, 1242 - 1243
Structural	1185, 1223, 1246 - 1249
Thread Retaining	1234, 1244 - 1245
Tile	1246
Adjustable Hand Reamers	157
Hook Wrenches	297
Ladders	1524
Wrenches	774 - 776
Agricultural Tools	870 - 871
Air Cushions, Packaging Material	1397
Duster, Aerosol	1310, 1335
Fed Respirators	1616 - 1619
Filters	586
Fittings, Ring-Main	580
Fresheners	1268, 1319
Hose Balancers	399, 547
Preparation Equipment	406 - 407
Tool Accessories	399, 547
Tools	410, 416 - 440
Airline Accessories	403 - 409, 411, 547, 575
Connectors	402 - 405
Filters	406 - 407
Gauges	408
Hoses	399 - 401, 547
Lube Oils	408, 1259
Alcohol Free Wipes	1822
Aluminium Hammers	890
Tool Cases	1085 - 1086
Transport Cases	697
Aluminium-Oxide Cloth	347
Aluminium-Oxide Paper	346
Anchor Bolts	1184 - 1186
Anemometers	606, 846
Angle Brackets	1549
Clamp, Welders	1465
Drills, Electric	513
Finders	1123
Grinders, Air	420 - 421, 424, 433
Grinders, Electric	480, 520 - 525
Plates	659 - 660
Angular Contact Bearings	1192
Angular Torque Gauges	944
Anti-Freeze Testers	809
Anti-Rust Paper	1403
Anti-Seize Products	1259, 1264 - 1265
Anti-Spatter Fluids	1263, 1469
Anti-Vibration Gloves	1675
Anti-slip Floor Products	1237, 1776 - 1777
Anvils, Micrometers	647
Apron Dispensers	1726
Aprons, Carpenters	1078
Plastic	1726
Polycotton	1726
Araldite	1222 - 1223
Arbor Spacers	292, 292
Arbors, Holesaw	104
Polishing Mop	388
Slitting Saw	292
Arc Welders	1442 - 1445
Archive Boxes	1326 - 1327, 1341, 1346
Argon Welding Equipment	1463
Arrestors, Flashback	1463
Ashtrays	1507
Asphalt Rakes	875
Aspirators, Laboratory	667
Attache Cases	1328
Auger Bits	1126

Auto Maintenance Products	784, 786, 791, 1260, 1269
Automatic Lubricant Activators	1283
Automotive Fuses	777
Testers	779, 788 - 789, 793, 809
Wire Splicing Kit	777
Axes	885
Axis Gauging Equipment	599
Axle Stands	794
B	
Back Supports	1682
Backing Pads	352, 548 - 549
Badges, Security	1368
Badges, Visitor	1368
Bag Sealers	1401, 1791
Bags, Gripseal	1352, 1401
Laptop	1082
Polythene	1401
Woven Polypropylene	1399, 1509
Balaclavas	1719
Ball Joint Service Tools	806
Ball Pein Hammers	883
Balls, Steel	1195
Banding Materials & Tools	1394 - 1396
Bandsaw Blades	32 - 36
Bandsaw Machines	451 - 453
Bar-B-Q Spray Paints	1240
Barn Type Tool Boxes	1087
Barrel Adaptors	931
Barrel Vents	931
Barrier Creams	1303, 1307
Pipes, Speedfit	579
Systems, Portable	1815
Tapes	1775
Barriers, Access	1811 - 1813, 1815
Base Fixturing Components	732 - 733
Baseball Caps	1587
Bases, Magnetic	632 - 635
Basin Wrenches	1052
Bath, Plasterers	822
Bathroom Cleaners	1311
Bathroom Locks	1546
Batteries	1488 - 1491
Batteries & Chargers, Cordless Tool	492, 498, 500 - 501, 504, 508 - 511
Batteries, Rechargeable	1490
Battery Chargers	1490
Chargers, Automotive	778
Starters	779
Testers	779, 1488
Beakers, Laboratory	666
Beam Clamps	1531
Beard Masks	1725
Bearing Fit	1245
Heaters and Fitting Tools	1193, 1196, 1200
Lock Nuts & Retainers	1196
Separators	802, 805
Bearing, Housing Units	1197
Bearings, Adaptor Sleeves	1196
Angular Contact	1192
Axial Deep Groove	1193
Cylindrical Roller	1202
Deep Groove Ball	1188 - 1190, 1194 - 1195
Open Type	1188 - 1189
Sealed	1188 - 1189
Self Aligning	1191 - 1192, 1194
Shielded	1188 - 1189
Spherical Roller	1201
Spindle	1195
Stud Track Roller	1203
Belt Dressing Sprays	1264
Sanders, Air	430 - 431
Sanders, Electric	448, 542
Skimmers, Tramp Oil	1282
and Disc Sanders, Electric	448, 450, 542
Belts, Drive	1204 - 1209
Belts, Timing	1209
Bench Drills	443
Grinders	412 - 413, 480
Grinders Accessories	413
Hooks	1118
Magnifiers	611
Planes	1121
Protectors, Laboratory	662
Shears	760
Spirit Levels	655
Bench, Hardness Testers	600
Benches, Work	699 - 701, 703 - 706, 708, 710 - 711
Bend-a-Light	1494
Bevel Protractors	615
Bevels, Carpenters	1129
Bi-Metal Holesaws	105, 107
Bib and Brace	1720
Bibtap	577
Bicycle Tools	1103
Bill Hooks	870 - 871
Binders, Comb	1383
Binders, Ring	1347 - 1348
Binding Covers, Presentation	1383
Binoculars	612 - 613
Bins, Cigarette	1507
Swing	1417, 1507
Wheelie	1508
Bits, Auger	1126
Flat	1127
Forstner	1126
Black Spanners	1000
Blacksmiths Drills	89
Blade Fuses	777
Blades, Coping Saw	102, 922, 1118
Fret Saw	102, 922, 1118
Hacksaw	102 - 103
Indexable Parting	270 - 271
Jigsaw	376 - 378, 502, 533
Knife	911, 913
Sabre Saw	378, 378

Blades, Tile Saw	477, 922
Blankets Foil, Emergency	1822
Blanks, Tool	293
Bleach	1312 - 1313
Block Planes	1120 - 1121
Block Trolleys	1531
Blow Guns	409
Blow Lamps	1440
Blowers, Garden	485
Blu-Tack	1344
Board Lifter	821
Body Filler	1271
Repair Kits	783 - 784, 1270 - 1271
Saw Blades	429
Warmers	1712 - 1713
Bodywork Tools	782 - 784, 796, 808
Boiler Suits	1720 - 1721
Bolt Cutters	1070 - 1071
Bolts, Anchor	1184 - 1186
Door	1547, 1552
Eye	1790
Panic	1544
Stainless Steel	1168 - 1169, 1169
Steel	1168 - 1170
Bonnets, Polishing	549
Book Cases	1359
Books, Display	1353
Books, Record	1385 - 1386
Booster Packs	779
Booster/Starter Cables	778
Boots, Safety	1729 - 1750, 1752 - 1753, 1755 - 1757, 1759
Boots, Wellington	1732
Bore Cutters, HSS	110, 162 - 163
Bore Gauges, Dial Indicating	636
Boring Bars	204 - 205, 217 - 221, 241, 339
Boring Head Sets	300
Boss Jointing Compounds	1236
Bossing Mallets	886
Bottle Jacks	794 - 795
Bottle Oilers	930
Bottles, Laboratory	666
Bouffant Cap, Disposable	1725
Bow Saws	869
Bow Shackles	1790
Box Files	1346
Box Spanners	1002
Boxes, Archive	1326 - 1327, 1341, 1346
Post/Suggestion	1371, 1391
Storage	679
Bradawls	1125
Brake Tools	785 - 787, 1060
Brass Rules	851
Brasso	1267
Brazed Tools	196 - 197
Brazing Rods	1484
Breast Drills	1122
Brick Acid	1237
Bricklaying Tools	812 - 813, 824, 883, 908
Bridge Reamers, Machine, Taper Shank	159
Brief Cases	1328
Broaches, Keyway	37
Brooms	1499, 1505 - 1506
Brush Cleaners	1308
Brush Cutters	486
Brushes, Artists	899
Car Wash	1500
Decarbonising	585
Decorators	894 - 895, 899
Fitch	899
Hand	1499, 1504
Laminating	1500
Nail	1502, 1504
Paint	894, 1500
Radiator	894
Sash	899, 1500
Scratch	483, 1498
Scrubbing	1502, 1504
Slimline	1498
Spark Plug	808
Suds	1500
Suede	1502
Tar	1501
Toilet	1502
Tube	1498
Bubble Bags & Wrap	1400
Buckets	822, 880, 895, 1091, 1500 - 1501, 1504
Buckets, Mop	1505
Buffing Pads	549
Builders PVC Tapes	1796
Builders Trowels	823, 825
Building Repair Products	1225, 1233
Bump Caps	1581 - 1587
Bungee Load Straps	1786 - 1787
Burettes, Laboratory	667
Burrs, Carbide	362 - 365
Burrs, Diamond Coated	365, 483
Bushing Drills	89
Business Card Holders	1328, 1352
Butane and Propane Gas Equipment	832 - 835, 1438 - 1441
Butt Welded Turning Tools	38
Button Head, Socket Screws	1154 - 1155, 1176

C

C-Hook Spanners	297 - 298, 1001, 1017
CD Labels	1377
CD Storage Cases	1336
CD's Writeable	1337
CNC Tool Storage	290 - 291, 714 - 715
Cabin Hooks	1554
Cabinet Scrapers	1123
Cabinets and Work Benches	699 - 701, 703 - 706, 708, 710 - 711
Cabinets, Filing	1354, 1357, 1359
Fireproof	696, 1354
Key	1369 - 1370
Medical	696, 1354

Cable Cutters	905
Extensions	554
Protectors	550
Reels	552, 554
Strippers	830
Ties	829, 1787
Calculators	824, 909, 1378 - 1379
Caliper Attachments	621
Calipers	849
Calipers, Dial	618 - 619
Digital	622 - 625, 631
Spring	849
Vernier	620 - 621
Cantilever Clamps	925
Cantilever Tool Boxes	1087
Cap Screws, Socket Head	1138 - 1146, 1159
Car Battery Chargers	778
Care Products	461, 1266 - 1270, 1319, 1500
Creepers	792
Roof Rack Bars	810
Seat Covers	1579
Carabiner Hooks	1789
Card Holders, Business	1328, 1352
Cards, Index	1386
Cards, T	1331
Cargo Straps	1786 - 1787
Carpenters Aprons	1078
Carpenters Pincers	960
Carpet Adhesive	1246
Cleaner	1318
Protectors, polythene	1246
Carry Cases	1328
Carton Openers	920
Carton and Strapping, Cutters	920
Cartons, Packaging	1397
Cartridge Roll Mandrels	359
Rolls	359
Unit, STTC	223
Units, Indexable	222 - 223
Cases, Aluminium Transport	697
Cases, Carry	1328
Cash Boxes	1371
Cast Iron Surface Plates	660
Castors, Wheel	1428, 1534 - 1536
Catering Consumables	1324 - 1325
Catering Equipment	1322
Cement Cleaner	1237
Cement Mixer	414
Centering Drills	46
Centre Drills	44 - 45
Finders	857
Punches	854
Centres, Revolving	765 - 767
Centres, Solid	765
Centrifuge Tubes	664
Chain Bolt	1552
Hoists	1532
Hooks	1789
Pin Extractors	1053
Sprockets	1211
Wrenches	798, 1017, 1053, 1063
and Drive Lubricants	1264 - 1265
and Rope Fittings	1786, 1788 - 1789, 1804
Chain, Roller	1210 - 1211
Chain, Steel	1788
Chainmail Gloves	1726
Chainsaws	485
Chairs, Conference	1363 - 1364
Industrial	1365
Office	1360 - 1362
Reception	1361
Chalk Lines	1128
Chalks	1508
Chamois	1503
Channel Blocks	1313
Chargers, Battery	1490
Chaser Dieheads	39
Chaser Dies	39
Chasers, Hand/Machine	40
Chemical Metal	1270
Chemical Protective Workwear	1703
Chicken Wire	881
Chinagraph Pencils	1424
Chisel Honing Guide	1125
Chisel, Gasket Cleaner	1235
Chisels, Cold	812 - 815
Power Tool	519, 569
Wood	1124 - 1125
Chop Saws, Electric	528
Chuck Arbors, Threaded	739
Jaws, Lathe	768 - 770
Keys	738
Keys, Lathe	770
Lock Nut and Screws	297
Chucking Reamers, Machine	159 - 161
Chucks, Drill	736 - 738
ER Collet	296
Keyless, Drill	736
Lathe	763
Pin	861
VDI	304, 306 - 307
Cigarette Waste Bins	1507
Circlips	1160, 1181
Circuit Board Drills	47
Circuit Testers	777, 779, 829, 848
Circular Saw Blades, HSS	162 - 163
Circular Saws, Electric	478, 526 - 527
Clamp Heads	927
Clamp Meters	844
Clamping Sets, Machine T-Slot	719 - 720
Clamps, Beam	1531
Cantilever	925
Corner/Frame	1119, 1465
G	924
Hose	786 - 787, 1515

Clamps, Lifting	1531
Magnetic Welding	938
Quick Grip	925 - 926
Rack	718
Sash	923
Speed	927
T Handled	927
Toggle	741 - 749
Toggle, Hook	749
Toggle, Horizontal	749
Toolmakers	861
Claw Hammers	882
Cleaners, Compressed Air	1310, 1335
Coolant System	1282
Degreasing	1253, 1256 - 1258, 1269, 1311, 1315
Drain	1312
Electrical	1256
Floor	473, 1318
Foaming	1259
Gasket	1235
Hand	1298 - 1301, 1303 - 1309, 1512
Hard Surface	1314 - 1315, 1317, 1319
Paint Brush	1308
Patio/Path	1312
Rapid Drying	1257, 1315 - 1316
Sanitising	1302, 1315
Solvent	1258
Stain Removers	1311, 1316
Steam	473
Vacuum	466 - 472
White Board	1310, 1335, 1390
Cleaning Baths	1254
Cloths and Sponges	895, 1502 - 1504
Wipes	1335
Clevis Pins	1161
Clipboards	1342
Clips, Spire	1160
Clocks	1330
Clogs, Safety	1759
Clothing	1476, 1690 - 1727
Cloths, Cleaning	895, 1502 - 1504
Club Hammers	885
Coat Hooks	1549
Coat/Hat Stands	1364
Coffee and Tea	1324 - 1325
Coil Spring Compressors	806
Coil Spring Washers	1179
Cold Chisels	812 - 815
Collet Chucks ER	296
Collet Sets	297
Collets for Air Grinders	422 - 424, 426
Collets, Autolock	154
PSC Type	298
Rubberflex	301, 739
Single Angle	297
Straight	483
Type R8	292
Comb Binders	1383
Comb Binding Accessories	1383
Combi-Kits, Cordless	489, 496 - 497, 505
Combination Drill Tap, HSS	169
Sets	615
Spanners	1003 - 1008
Squares	1129
Compact Tool Boxes	1088
Component Protection	1224
Compressed Air Dusters	1310, 1335
Compression Fitting Olives	577
Fittings	577
Tester	788 - 789
Compressors	455 - 457
Computer Accessories	1332 - 1334
Labels	1375
Screen Wipes	1310, 1335
Supplies	1332, 1337
Computer, Mouse	1332
Cones, Caution	1500
Cones, Traffic	1813
Connecting Cable SPC	624
Connecting Link, Roller Chain	1210
Connectors, Hydraulic	587, 936
Connectors, Speedfit	578
Containers, Laboratory	662, 664
Containment Storage	1288 - 1291
Continuity Bonds	1052
Continuity Testers	777, 847
Contour Gauges	900
Contractors Tools	872 - 875
Converters, Square Drive	1019, 1025, 1031, 1033
Coolant Adaptors, Rotary	335
Hoses	756 - 759
Mixer Valves	1282
Sump Emptiers	1282
System Accessories	1282
System Cleaners	1282
Coolers, Drink	1325
Cooling System Tester	788 - 789
Copaslip	1265
Copier and Printer Paper	1338 - 1340
Coping Saws and Blades	102, 922, 1118
Copper Grease	1265
Hammers	890
Washers	1159
Copper/Rawhide Hammers	890
Copy Holders	1334
Cord, Cotton	1785
Jute	1785
Nylon	1785
Polypropylene	1785
Cordless Power Tools	474, 488 - 507, 536
Cordless Tool Batteries & Chargers	492, 498, 500 - 501, 504, 508 - 511
Core Drills, Indexable	335
Corner Braces, Steel	1552
Clamps	1119, 1465
Plates, Steel	1552

Corner Rounding Cutters	110
Correction Fluids and Tapes	1432 - 1433, 1794
Corrosion Protection	1258, 1260 - 1262, 1270, 1281, 1797
Corrugated Cartons	1397
Corrugated Rolls	1400
Cotec Safety Tape	1822
Cotter Pins	1181
Cotton Twine	1785
Counterbore, Modular System	308 - 320
Counterbores, HSS	43
Counterbores, Indexable	321
Counters, Hand Tally	608
Countersinking Drill Bits	561
Countersinks, Carbide	43
HSS	41 - 42
HSS-Co	41
Couplings, Elastometric	1213
Coveralls, Workwear	1704 - 1705, 1720
Covers, Binding Presentation	1383
Cranes	1530
Creepers, Car and Garage	792
Crimping Pliers	826, 828
Crimping Tools	587, 826 - 828, 831
Cross Pein Hammers	884
Crowbars	814
Crowfoot Wrenches	1016
Cultivators	864
Cupboards, Storage	680 - 687, 690 - 691, 1359
Cut-Off Saws	528
Cut-Off Wheels	370, 483
Cutters, Pipe	1058 - 1059
Router	562 - 566
Side	831, 904, 961, 1070 - 1071
Strapping and Carton	920
Wire	955
Cutting Attachments, Welding	1460
Compounds	1272
Discs	369 - 370, 370 - 371, 483
Discs, Diamond	546
Fluids	1272, 1278 - 1280
Nozzles, Welders	1458 - 1461, 1467
Cutting-Off Blades, HSS	163
Cuvettes, Laboratory	662
Cyanoacrylates	1242 - 1243
Cycle Tools	1103
Cylinder Tools	790 - 791, 808
Cylinder Trolleys, Gas	1462
Cylinders, Pneumatic	575, 581 - 584
Cylindrical Roller Bearings	1202

D

D.T.I. & Mag Stand Kits	598
DIY Power Tools	477 - 483
DVD's Writeable	1337
Danish Oil	1237
Data/Reference Books	1435
Date and Word Stamps	1366 - 1367
De-ionised Water	1268
Dead Blow Hammers	887, 889
Dead Locks	1546
Deburrer, Pipe	1059
Deburring Tools, Hand	224 - 225
Decarbonising Brushes	585
Decimal Equivalents Charts	48
Decorators Brushes	894 - 895, 899
Decorators Dust Sheets	895, 1402
Dee Shackles	1790
Deep Groove Ball Bearings	1188 - 1190, 1194 - 1195
Degreasers	1256
Degreasing Cleaners	1253, 1256 - 1258, 1269, 1311, 1315
Dehumidifiers	559
Delta Sanding Sheets	354
Demagnetisers	937
Demolition Hammers, Electric	519
Depth Gauges	618, 626, 852
Gauges, Digital	626, 626
Gauges, Vernier	621
Micrometers	638
Descaler, Kettle	1311
Desiccants	1397
Desk Tidys	1341
Desks	1356, 1358
Desoldering Accessories	838
Desoldering Tools	838
Detectors, Gas	607
Detectors, Voltage	829, 844, 848
Detergents	461, 473, 1316 - 1317
Dial Calipers	618 - 619
Gauge Stands	633
Indicating, Bore Gauges	636
Indicator Spares	591, 593, 595, 598
Test Indicators, Lever type	595 - 598
Test Indicators, Plunger Type	591 - 594
and Digital Height Gauges	616 - 617
Diameter Tapes	909
Diamond Core Drills	546
Cutting Discs	546
Hand Files	101
Holesaws	106, 546
Wheel Dressers	771
Diaries	1328
Die Grinders, Air	420, 422 - 426, 434
Grinders, Electric	529
Mould Cutters, Indexable	288 - 289
Nuts, Metric Fine	168
Springs	1198 - 1199
Stocks	859
Dieheads, Chaser	39
Diemakers Riffler Files	99
Dies & Die Nuts, HSS	166, 168, 170, 172, 174 - 180
Dies & Die Nuts, Left Hand, HSS	181
Dies, Chaser	39
Disc Micrometers	646
Disc Sanders, Electric	450
Discharge Hoses	400

Dishcloths	1503
Dishwasher Materials	1317
Disinfectant	1311 - 1313, 1315
Diskettes	1337
Dispensers, Cleaning Wipes	1309, 1512, 1571, 1573, 1578
Oil	932
Packing Materials	1402
Protective Clothing	1665
Soap & Hand Cleanser	1298 - 1300, 1302 - 1306, 1308
Tape	1791
Dispensing Bottles	930
Display Books	1353
Disposable Bouffant Cap	1725
Gloves	1665 - 1668
Knives	920
Dividers, Spring	849
Dividers, Subject	1350
Document Files	1326, 1352
Pockets	1349, 1352 - 1353, 1783
Shredders	1380 - 1381
Wallets	1351, 1353
Dollies, Panel Beating	780
Door & Gate Furniture	1547, 1550 - 1554
Bolts	1547, 1552
Bolts, Monkey Tail	1552
Closers	1545, 1553
Handles	1548 - 1549, 1554
Kick Plates	1549
Locks	1546 - 1547, 1550, 1552
Mats	1499
Plates	1549
Stops	1549
Double Sided Tapes	1794
Dovetail Cutters	111
Dovetail Jig	539
Dowels, Steel	1161, 1181 - 1182
Drain Cleaner	1312
Rods	1054 - 1055
Unblocker	1054
Drainage Plungers	1054
Drainer, Oil	933
Draining Rack, Laboratory	669
Drawer Cabinets	709, 1073, 1357, 1359
Drawer Dividers	691, 712 - 713
Drawing Pins	1343
Drench Shower	1823
Dressers Wheel, Diamond	771
Dressers Wheel, Huntington	771
Dressings and Plasters, Medical	1819, 1821 - 1823
Drill Bit Sharpener	396
Blanks, HSS	63
Chucks	736 - 738
Drifts	764
Gauges	852
Inserts	323 - 334
Press Vices	442, 752 - 753
Sets, Jobber	56, 66 - 69
Sets, Multi Purpose	56, 515
Sleeves, Morse Taper	764
Tap Combination, HSS	169
and Tap Sets, HSS	66
Drilling Inserts	200
Drilling and Milling Machines	441, 446 - 447
Drills, Air	416 - 419
Angle, Electric	513
Bench	443
Blacksmiths	89
Breast	1122
Bright, Long Series	81
Carbide Stub	52 - 53
Carbide, Jobber	77, 79
Carbide, Ratio	93
Carbide, Spotting	46
Carbide, TiN Coated, Jobber	77
Centering	46
Centre	44 - 45
Circuit Board	47
Cordless	474, 488, 488, 490 - 495, 497 - 500, 503 - 507
Electric	514
HSS, Extra Length, Straight Shank	67, 84 - 85
HSS, Jobber	58 - 63, 65, 68, 78 - 79
HSS, Jobber, Parabolic Flute	74
HSS, Jobber, Quick Spiral	78
HSS, Jobber, TiN	64 - 65, 78
HSS, Long Series	67, 80 - 82
HSS, Quick Spiral, Venting	47
HSS, Spotting	46
HSS, Stub	49 - 50, 53
HSS, Taper Shank	86, 88, 90
HSS-Co, Extra Length, Straight Shank	84
HSS-Co, Jobber	71, 74 - 75
HSS-Co, Jobber, High Helix for Aluminium	73
HSS-Co, Jobber, Parabolic Flute	72, 74
HSS-Co, Long Series	83, 83
HSS-Co, Micro Precision	47
Hammer, Electric	476, 517 - 518
Hand	1122
Impact Bits	109
Impact, Electric	476, 514 - 516
Indexable	198 - 199, 323 - 334
Jobber	57 - 58, 61, 65, 71 - 72, 74, 483
Jobber, High Helix	73
Long Series Parabolic Flute	84
Masonry Bits	108, 515
Pillar	442, 444 - 445
Roll Forged, Jobber	56
Rotary, Electric	512 - 513
SDS-Max Hammer Bits	519
SDS-Plus Bits	109, 517
Sheet & Tube	41
Sidewinder Bits	1127
Stellite	164
Taper Shank	86 - 90, 90
Drink Coolers	1325
Drinking Water	1325

Drinks	1324 - 1325
Drip Trays, Oil	932
Drive Belt Tension/Size Gauges	1207, 1209
Drive Belts	1204 - 1209
Drive, Chain	1210 - 1211
Drop Head Threaders	1062
Drum Opening Tools	932
Taps	931
Trucks	932, 1801, 1808
Vents	931
Dry Lining Tools	821
Wall Screws	1175
Wipe Boards & Accessories	1389 - 1390, 1393
Wipe Marker Pens	1390, 1393
Drying Ovens	1478
Duplicate Books	1386
Dust Extractors	467, 472
Dust Sheets, Decorators	895, 1402
Dustbins	1507
Dusters	1502 - 1503

E

Ear Defenders	1595 - 1597
Plug Dispensers	1590 - 1593
Plugs	1588 - 1594
Earthing Clamps	1465
Easyliner Markers	1274 - 1275
Edge Finders	857
Ejector Springs, Holesaw	104
Elastometric Couplings	1213
Elbow Pads	1683
Elbows, Speedfit	578
Electric Motor, Soft Starter	1214
Motors	1215 - 1216
Tool Accessories	485, 530
Electrical Cleaner Sprays	1256
Fixtures and Fittings	553
Sockets	551, 553
Electrode Holders	1465
Electrodes, Welding	1481 - 1483
Electronic Force Gauges	601
Emery Cloth	347 - 348
End Fittings, Torque	947
Mills, Carbide	134 - 144, 148 - 153
Mills, HSS	116 - 117, 120 - 121, 145
Mills, HSS, Screwed Shank, Long Series	117
Energy Cube	550
Engine Analyser	793, 842
Oils	1277
Tools, Specialist	788, 807 - 809
Engineers Hand Files	95 - 96
Hooks and Picks	854
Marking Blue	1276
Scrapers	861
Spirit Levels	654 - 655
Squares	655, 849
Straight Edges	849
Vices	750 - 751
Engraving Pens, Air	426
Engraving Pens, Electric	482, 812
Envelopes	1345
Envelopes, Packing List	1397
Envelopes, Padded	1398 - 1399
Epoxy Adhesives	1222 - 1223
Equipment, SPC	631
Erasers	1434
Escape Ladders	1230
Escutcheons	1548 - 1549
Euro Nesting Bins	679
Exhaust Mount Pull Hook	809
Exhaust Repair Products	1269
Expanding Files	1327, 1346
Filler	1233
Foam Fillers	1233
Reamers, Machine, Taper Shank	159
Explorer Cases	1083
Extension Bars, Square Drive	905, 1019, 1023, 1028, 1033 - 1034
Cables	554
Ladders	1527
Sockets, Electrical	550 - 551
Sockets, Morse Taper	764
External Grooving	266 - 267
Extinguishers, Fire	1228 - 1229
Extra Length Drills, HSS, Straight Shank	67, 84 - 85
Extra Length Drills, HSS-Co, Straight Shank	84
Extractors, Packing	1252
Screw	164
Tap	164
Eye Loupes, Magnifying	610 - 611, 858
Pads, Sterile	1822
Protection	1470 - 1472, 1583, 1621 - 1637
Wash Stations	1823
Eyebolts	1790

F

Fabric Conditioners	1316
Face Masks	1600 - 1619
Mill Adaptors	292 - 293, 299
Protection	1631, 1634
Shields, Welders	1470, 1635
Fall Arrest Equipment	1685 - 1688
Fans, Electric	559, 1388
Fasteners, Paper	1342 - 1343
Fax Consumables	1340, 1415
Feather Edges	821
Feeler Gauges	853
Feeler Stock	853
Felt Bobs, Cones & Sticks	387
Fencing	881, 1811
Fencing Mauls	875
Fencing Tool	960
Fibre Tip Pens	1420, 1430
Vice Jaws	1067
Washers	1159

File Boxes	1346
Carding	94
Handles	95, 891
Files, Diamond	101
Diemakers Riffler	99
Document	1326, 1352
Engineers Hand	95 - 96
Expanding	1327, 1346
Lever Arch	1347
Milled Tooth	100
Needle	98
Precision	97
Rasps	100
Suspension	1351
Thread Restoring	40
Filing & Record Systems	1391
Filing Cabinets	1354, 1357, 1359
Fillers, Expanding Foam	1233
Fillers, General Purpose	1233
Filling Knives	892
Filter Cartridges, Respiratory	1610 - 1615, 1619
Filter, Magnetic	677
Filter/Regulators	406 - 407
Filters, Air	586
Finders, Centre	857
Finders, Edge	857
Fire Blankets	1229
Extinguishers	1228 - 1229
Prevention/Protection	1228, 1230, 1510
Firegum	1269
Fireproof Cabinets	696, 1354
Fireproof Safes	1371
Firm Joint Calipers	849
First Aid Equipment	1816 - 1823
Aid Kits	1816 - 1822
Aider Protection Pack	1820, 1822
Fit Test Kits	1600
Fitch Brushes	899
Fitters Vices	751
Fixit Kits	1142, 1146, 1157 - 1163
Fixtures and Fittings, Electrical	553
Fixturing Components	732 - 733
Flame Retardant Workwear	1476, 1719, 1721 - 1723
Flap Discs	366 - 367
Flap Wheels, Abrasives	368
Flared Nut Ring Spanners	1012
Flaring Tools, Pipe	1060
Flash Drives	1336
Flashback Arrestors	1463
Flasks, Stainless Steel	1322
Flat Bits	1127
Flat Stock, Ground	716 - 717
Flawfinders	1263, 1469
Fleece Jackets	1713
Flip Chart Pads	1392
Floodlights	577
Floats	822 - 823
Floodlights	554 - 556
Floor Cleaners	473, 1318
Degreasers	1237
Etcher	1237
Marking Tapes	1776
Matting	1537 - 1543, 1776
Paints	1237
Protector, Polythene	1246
Repair Products	1225, 1237
Scrapers	875, 1499
Scrubbers	473
Sealers	1237
Signs	1780 - 1782
Fluids, Grinding	1280
Fluorescent Paints	1241
Fluxes	838 - 839
Foam Cleaner Sprays	1259
Foam Packaging, Rolls	1403
Foam, Expanding	1233
Foil Blankets, Emergency	1822
Folders	1352 - 1353
Folders, Sheet Metal	761
Folding Posts	1811
Rules	1129
Tables	895, 1355
Foliac Pipe Jointing Compound	1236
Fomblin Grease	1284
Food Industry Clothing	1727
Lubricants	1236, 1283, 1286 - 1287
Paints	1231
Food Processing Knives	918 - 919
Footcare, Insoles & Sprays	1718
Footrests	1334
Footwear, Non-Safety	1732
Footwear, Safety	1730 - 1759
Force Feed Oil Cans	930
Force Gauges, Electronic	601
Fore Planes	1121
Forks, Garden	863 - 864
Forstner Bits	1126
Fount Sets	972
Frame Clamps	1119, 1465
French Chalk Holder	1461
Frequency Inverters	1214
Fret Saws and Blades	102, 922, 1118
Fridges	1323
Fuel Containers	810
Pump Testers	786, 788
Treatments	1269
Fume Extraction, Welders	1477
Funnels	668, 928
Furniture Polish	1314
Furniture, Canteen and Outdoor	1355, 1364
Fuses, Automotive	777

G

G-Clamps	924
Galvanising Paint	1238
Garage Creepers	792
Garden Hose Accessories	877 - 879
Lighting	557
Mesh	881
Refuse Bag	822, 880
Sprayers	876, 878 - 879
Ties	1787
Waste Bags	880
Gardening Accessories	876, 1787
Tools, Hand	862 - 869
Tools, Powered	484 - 487
Garnet Paper	346
Gas Bottles, Welding	1440 - 1441, 1447
Cartridges, Nail Gun	536
Detectors	607
Regulators, Welding	1447, 1463
Spark Igniters	1403
Welding & Cutting	1457 - 1463
Gasket Cleaner	1235
Gasket Sealants	1234 - 1235
Gauge Blocks	653
Gauges, Air Pressure	408
Angular Torque	944
Contour	900
Depth	618, 626, 852
Digital Depth	626
Drill	852
Feeler	853
Force, Electronic	601
Height, Dial and Digital	616 - 617
Height, Vernier	616
Hole	856
Marking	1128
Mortice	1128
Radius	852
Screw	852
Screw Ring	658
Slip	653
Surface	860
Taper Bore	851
Telescopic	856
Thickness	618, 631
Wire	852
Gauging, 3D Axis	599
Gauntlets, Welders	1474 - 1475, 1680 - 1681
Gazebo	881
Gear Oils	1264, 1281
General Purpose Polish, Peek	1267
General Purpose Saws	1118
Generators, Power	458 - 459
Gimlets	1125
Gland Packing, Pan Fibre	1252
Glass & Tile Drills	108, 547
Cleaners	1267, 1311, 1314
Paper	346
Glassware, Laboratory	670 - 671
Glove Dispensers	1724
Gloves, Abrasion Resistant	1648 - 1654
Chainmail	1726
Chemical Resistant	1661 - 1664
Cotton	1642
Cut Resistant	1649, 1655 - 1657
Disposable	1665 - 1668
General Handling	1475, 1640 - 1647, 1649, 1658, 1681
Goatskin	1642
Household	1665
Latex	1656, 1659
Nitrile	1651, 1663, 1666, 1668 - 1672
PVC	1669
Rubber	1664 - 1665
Specialist	1673 - 1676
Tear Resistant	1658 - 1660, 1677
Thermal	1677 - 1679
Welders Gauntlets	1474 - 1475, 1680 - 1681
Glue Guns	481
Glue Sticks	481, 1344
Goggles, Safety	1631 - 1633
Goggles, Welders	1470, 1635
Graffiti Remover	1316
Grafting Tools	874
Granite Parallels	601
Squares	601
Straight Edges	601
Surface Plates	601
Vee Blocks	601
Granules, Absorbent	1291
Grass Shears	866 - 867
Grease	1202, 1258, 1265, 1283 - 1285
Grease Guns	930, 933 - 935
Nipples	936
Pumps	930, 933
Grease, Copper	1265
Grinders, Cordless	489, 496, 502
Grinders, Die, Electric	529
Grinding Compounds	397 - 398, 483
Discs	366, 369 - 371
Fluids	1280
Wheels	373 - 375, 483
Grip Wrenches	964 - 968
Gripseal Bags	1352, 1401
Grommets	1160
Groove Micrometer	650
Grooving Inserts, Carbide	265, 268 - 269
Toolholder Blades	266 - 267
Toolholders	267 - 268
Grooving, External	266 - 267
Grooving, Internal	266
Ground Flat Stock	716 - 717
Grout Removers	900
Grout Reviver	1246
Grout, Tile	1246

Guards, Machine	763
Guillotines	1416
Gun Gum	1269
Guns, Grease	930, 933 - 935
Shrink	1403
Tagging	1377
H	
HSK Hollow Taper Shanks	299
Hacking Knives	893
Hacksaw Blades	102 - 103
Frames	904, 921 - 922
Machines	454
Hairnets, Workwear	1724
Half Face Respirators	1610 - 1612, 1615, 1618 - 1619
Hammer Drills, Electric	476, 517 - 518
Shafts	891
Wedges	891
Hammerite Paints	1240
Hammers, Air	427 - 428
Aluminium	890
Ball Pein	883
Brick	883
Claw	882
Club	885
Copper	890
Copper/Rawhide	890
Cross Pein	884
Dead Blow	887, 889
Electric, Demolition	519
Machinist	883
Magnetic	884
Nylon Faced	888 - 890
Planishing	886
Plastic Faced	888 - 890
Rawhide	890
Rubber	889
Scutch	884
Sledge	885
Warrington	884
Welders Chipping	884
Hand Chasers	40
Conditioning Cream	1302 - 1303, 1307
Deburring Tools	224 - 225
Drills	1122
Files, Diamond	101
Files, Engineers	95 - 96
Files, Milled Tooth	100
Files, Needle	98
Files, Precision	97
Files, Rasps	100
Magnifiers	610 - 611
Pads, Abrasive	379
Reamers, Straight Shank	156 - 157
Reamers, Taper Pin	156
Scoops, Food	1506
Shovels	1499, 1506
Soaps and Cleaners	1298 - 1301, 1303 - 1309, 1512
Socket Reamers, Straight Shank	157
Socket Reamers, Taper Shank	159
Stamps	970 - 972
Tackers	1404 - 1405
Tally Counters	608
Towel Dispensers	1568, 1573 - 1574, 1578
Towels and Wipes, Paper	1568 - 1577
Wipes, Wet	1309, 1512 - 1513
Handles, Door	1548 - 1549, 1554
File	95, 891
Torque	941, 945 - 946
Handrail Brackets	1549
Hard Hats	1581 - 1587
Hardness Tester, Portable	599
Hardness Testers, Bench	600
Hasps	1554, 1559
Hat/Coat Stands	1364
Hatchets	885
Hats, Mob Cap	1725
Peak	1725
Pork Pie	1725
Snood Cap	1725
Thermal	1719
Trilby	1725
Windcheater	1719
Hawks, Plasterers	822
Hazard Marking Tapes	1775
Head Protection	1581 - 1587, 1590, 1719
Head Sets, Boring	300
Hearing Protection	1588 - 1597
Heat Guns	477, 530
Guns, Electric	477, 530
Sealers	1401, 1791
Heaters, Convector	1388
Fan	559, 1388
Space	558, 560
Heating Nozzles	1461
Heatshield Paint	1241
Hedge Shears	867
Hedge Trimmers	484
Height Gauges, Dial and Digital	616 - 617
Height Gauges, Vernier	616
Helicoil Insert Tools	1165, 1167
Inserts	1164, 1166
Taps	1166 - 1167
Helmets, Safety	1581 - 1587
Welders	1470 - 1473, 1635 - 1637
Welding	1472, 1637
Hexagon Wrenches	1131 - 1134, 1146
Hi-Visibility Fencing	881, 1811
PPE	1597
Workwear	1690 - 1701
High Tensile Threaded Bar	1187
Highlighter Pens	1420
Hinged Ladders	1524
Hinges	1553
Hoes	864 - 865

Hoists, Chain	1532
Lever	1531
Wire Rope	1531
Holdalls	1080
Holder, Business Card	1328, 1352
Holdfasts, Magnetic	937 - 939
Hole Cutters	856, 1125
Cutters, Adjustable	856, 1125
Gauges	856
Punches, Paper	1408
Holesaw Arbors	104
Holesaw Ejector Springs	104
Holesaws, Bi-Metal	105, 107
Carbide Tipped	106
Diamond	106, 546
Hollow Punches	856
Hones, Cylinder	791
Honing Guide	1125
Hoods, Coverall	1725
Hook Toggle Clamps	749
Wrenches	1017
Wrenches, Adjustable	297
Hookit Discs	355
Hooks and Picks, Engineers	854
Hooks, Cabin	1554
Carabiner	1789
Coat	1549
Horizontal Toggle Clamps	749
Hose Clamps	786 - 787, 1515
Clip Pliers	786 - 787
Clips	1514 - 1516
Hose, Polyurethane	401
Hoses, Airline	399 - 401, 547
Coolant	756 - 759
Hydraulic	928, 936
Nylon	400 - 401
Oxy/Propane	1462
Suction and Discharge	400
Water	400 - 401, 877
Welding	1462
Hot Dip Coatings	1224
Hotplate Stirrers, Laboratory	672 - 673
Housing Units, Bearings	1197
Hub Spanners	808
Huntington Wheel Dressers	771
Hydraulic Connectors	587, 936
Hoses	400, 936
Oils	1277, 1281
Presses	783
Pullers	797, 804 - 805
Ram	1530
Seal Repair Kits	783, 1530
Hygrometers	605 - 606, 846
Hylomar Compound	1235
I	
Ice Buckets, Laboratory	668
Identification Labels, Stores	1780, 1782 - 1784
Identification Tapes	1774 - 1775, 1810
Identity Discs	1515
Immersion Heater Spanners	1052
Impact Adaptors	109
Drills, Electric	476, 514 - 516
Sockets & Accessories	797, 1046 - 1048, 1048 - 1051
Wrenches	531
Wrenches, Air	437 - 440
Wrenches, Cordless	488, 490, 494, 501, 503, 505 - 506
Wrenches, Electric	531
and RSI Protection	1675, 1682 - 1683
Index Cards	1386
Index Tabs	1387
Indexable Boring Bars	204 - 205, 217 - 221, 241, 339
Core Drills	335
Counterbores	321
Die Mould Cutters	288 - 289
Drill Spares	220
Drills	198 - 199, 323 - 334
Inserts, Drilling	200
Inserts, Milling	226 - 231, 274 - 279, 283 - 289
Inserts, Parting & Grooving	271 - 272
Inserts, Spot Drilling	282
Inserts, Turning	229, 234 - 259, 280, 314, 321, 339, 341, 343
Milling Cutters	276 - 280, 283, 285 - 286
Spot Drill Spares	282
Spot Drills	282
Threading Inserts Vertical Partial Profile	262
Threadmills	332, 336
Toolholders	202 - 204, 206 - 216, 241, 249, 258 - 259
Indexing Units and Rotary Tables	735
Indicator Pins	1343
Indicators, Digital	624, 627
Injection Pump Puller	808
Ink Pads, Stamp	1366 - 1367
Inkjet Cartridges	1409 - 1415
Insect Killers	1323
Inserts, Carbide Threading	261 - 263, 336
Inspection Lamps	555, 793, 1496
Inspection Mirrors	858
Insulated Screwdriver and Plier Set	1105
Insulated Tools	904 - 906, 981 - 982
Insulation Tapes	1810
Internal Grooving	266
Micrometers	637, 650 - 651
Micrometers, Tubular	651
Inverters, Welding	1452 - 1455
Invisible Tapes	1798
Irons, Plane	561, 1121
Irons, Soldering	832 - 833, 835 - 836
Isocon	1271

J

Jack Planes	1120
Jackets, Workwear	1708 - 1709, 1712 - 1713
Jacks, Bottle	794 - 795
Scissor	795
Transmission	796
Trolley	795 - 796
Jars, Laboratory	664
Jerry Cans	810, 928, 1322
Jiffy Bags	1398 - 1399
Jigsaw Blades	376 - 378, 502, 533
Jigsaws, Electric	478, 532 - 533
Jizer Degreaser	1253
Jobber Drill Sets	56, 66 - 69
Drills	57 - 58, 61, 65, 71 - 72, 74, 483
Drills, Roll Forged	56
Drills, Carbide	77, 79
Drills, Carbide, TiN Coated	77
Drills, HSS	58 - 63, 65, 68, 78 - 79
Drills, HSS, Parabolic Flute	74
Drills, HSS, Quick Spiral	78
Drills, HSS, Quick Spiral, Venting	47
Drills, HSS, TiN	64 - 65, 78
Drills, HSS-Co, Parabolic Flute	72, 74
Joint Raker	824
Jointing Compounds	1234 - 1236
Jump Leads	778
Junction Boxes, Electrical	554 - 555

K

KC3 Throwaway Cutters	154 - 155
Kentucky Mops	1501
Kettle Descaler	1311
Key Cabinets	1369 - 1370
Reels	1369
Rings	1369
Steel	719
Keyboard Supports	1333
Keyboards, Computer	1332
Keyless Drill Chucks	736
Keys, Chuck	738
Keys, Stopcock	1066
Keyway Broaches	37
Kick Plates, Door	1549
Kitchen Appliances	1322 - 1323
Kitchen Rolls	1572
Kitchenware	1322
Kits, Body Repair	783 - 784, 1270 - 1271
Knee Pads	1682 - 1683
Knife Blades	911, 913
Knives, Cable	904 - 905
Craft	917
Disposable	920
Filling	892
Food Processing	918 - 919
Hacking	893
Linoleum	893
Palette	893
Pocket	911
Precision	916 - 917
Putty	893
Shoe	893
Snap Off	914 - 915
Strapping and Carton	920
Taping	821
Trimming	912 - 913
Knurls and Knurling Toolholders	194, 762
Kraft Paper	1399

L

Label Holders, Storage	1783 - 1784
Labellers	1372 - 1374
Labelling Tapes	1372 - 1373
Labels, Address	1374, 1377
CD	1377
Printer, Computer and Media	1375
Self Adhesive	1374, 1376 - 1377, 1773, 1782
Stores Identification	1780, 1782 - 1784
Vibration Hand Arm	1760, 1762, 1769, 1773
Laboratory Appliances	672 - 673
Consumables	662 - 664, 666 - 669
Glassware	670 - 671
Laces, Footwear	1718
Lacquers/Varnishes	1241
Ladder Tags	1772
Ladders, Accessories	1524, 1527
Adjustable	1524
Aluminium	1518 - 1521, 1524 - 1527
Escape	1230
Extension	1527
Glass Fibre	1520 - 1521, 1526, 1528
Hinged	1524
Step	1518 - 1521, 1524, 1524 - 1525, 1528
Telescopic	1527
Timber	1520, 1526
Laminate Trimmers, Electric	537
Laminating Brushes	1500
Laminating Pouches	1382
Laminators	1382
Lamps, Inspection	555, 793, 1496
Lanterns	1492, 1494 - 1495
Lanyards, Fall Arrest	1688
Lapping Products	397 - 398, 483
Laptop Bags	1082
Laser Levels	816 - 817
Measures	907
Printer Cartridges	1409 - 1410, 1414 - 1415
Latches	1546
Latex Gloves	1656, 1659
Lathe Carriers	756
Chuck Jaws	768 - 770
Chuck Keys	770
Chuck T-Nuts	770

Lathe Chucks	763
Lathes, Metalworking	442, 449
Laundry Products	1316
Lawn Edgers	864
Mowers	484
Trimmers	486
Layout Fluids	1273, 1276
Lazy Tongue Riveters	975
Lead Dressers	886
Leads/Probes, Multimeter Test	842, 844
Leaf Blowers	485
Leak Detector Spray	1263
Left Hand HSS Dies & Die Nuts	181
Left Hand HSS Taps	181
Lens Cleaners, Spectacle	1629
Lenses, Welding	1470, 1472 - 1473, 1635, 1637
Letter Plates	1549
Letter Trays	1341
Levels, Laser	816 - 817
Levels, Spirit	654 - 655, 816, 818 - 820
Lever Action Riveters	974
Arch Files	1347
Hoists	1531
Latches	1548 - 1549
Locks	1548 - 1549
Pumps	929
Type Dial Test Indicators	595 - 598
Lifters, Magnetic	1533
Lifters, Vacuum	784
Lifting Clamps	1531
Equipment	794 - 795, 1531 - 1532
Tables	1807
Light Meter	606
Lighting Products	504, 556, 1492 - 1496
Line Marking Paints	1274 - 1275
Line Pins	824
Linoleum Knives	893
Liquid Measures	668, 928
Listing Paper	1340
Literature Holders	1341, 1391 - 1392
Litter Picker	1499
Lo-Tac Tapes	1794
Load Notices	1781
Load Restraints	1786
Lock Bushes, Taper	1218
Cylinders, Door	1546
Nuts	1177
Nuts and Screws, Chuck	297
Nuts, Bearings	1196
Washers	1159
Lockers, Storage	688 - 689
Locking Tapes	908 - 909
Locknuts	1178
Lockout and Tagout Systems	1560 - 1563
Locks, Lever	1548 - 1549
Long Arm Riveters	975
Long Measuring Tapes	910
Loosefill Polystyrene Chips	1400
Loppers	868
Louvre Panels Storage Systems	678 - 679, 681
Low Noise Tapes	1793
Lubricants, Chain and Drive	1264 - 1265
Food Industry	1236, 1283, 1286 - 1287
General Purpose	1260, 1283
Specialist	1061, 1265
Wire rope	1264
Luggage, Personal	1329

M

MIG Welders	1446 - 1448, 1450 - 1451
Welding Equipment	1466 - 1467
Wire	1448, 1479 - 1480
Machine Chasers	40
Guards	763
Reamers, Straight Shank	160
Reamers, Taper Shank	158
Taps, HSS	183, 185 - 193
Vices	752 - 753
Machinists Spirit Levels	655
Magazine Racks	1341
Magic Tapes	1794
Magnetic Bases	632 - 635
Cable Guiders	829
Chuck Blocks	676
Drilling Machines	415
Filter	677
Grids	677
Hammers	884
Holdfasts	937 - 939
Lathe Chucks	676
Lifters	1533
Links	937
Location Markers	1782
Milling Machines, Electric	415
Numbers and Letters	1782
Pick-Up Tools	937 - 938
Plate Drags	937
Sampling Probes	677
Separator Rods	677
Sine Tables	676
Strips	677, 938, 1783
Tool Racks	937
Trays	938, 1099
Vee Blocks	937
Welding Clamps	938
Wing Covers	809
Magnets	939
Magnifiers, Bench	611
Magnifiers, Pocket/Hand	610 - 611
Magnifying Eye Loupes	610 - 611, 858
Magnifying Reticule	610
Mailing Tubes	1397
Mailroom Supplies	1398 - 1399, 1781
Mains Testers	829
Mallets	886 - 887

Mandrel	483
Manhole Keys	1066
Manure Forks	871
Manuscript Books	1386
Map Pins	1343
Marker Pens	1421 - 1423, 1783
Marker Pens, Dry Wipe	1390, 1393
Markers, Metal	1273, 1276
Markers, Paint	1275 - 1276
Marking Flags	1343
Marking Gauges	1128
Masking Tapes	1792
Masonry Drill Bits	108, 515
Mat Mouse	1332 - 1333
Materials Handling	1800 - 1803, 1806 - 1807
Mats, Door	1499
Matting, Safety	1537 - 1543, 1776
Mauls, Fencing	875
Maxi Fuses	777
Measuring Cylinders, Laboratory	667
Jugs	668, 668, 928
Wheels, Road	910
Mechanical Pullers	800 - 802, 805
Mechanical Stroke Counters	608
Mechanics Stethoscope	793
Mechanics Vices	750
Media Labels	1375
Medical Cabinets	696, 1354
Dressings	1819, 1821 - 1823
Tape, Cotec	1822
Melting Pots	1224
Memory Cards, SD	1337
Memory Sticks	1336
Mending Plate, Steel	1552
Metal Cleaners	1311
Markers	1273, 1276
Set	1223
Metallic Paint	1240 - 1241
Metalworking Lathes	442, 449
Meters, pH	672
Micro Precision, HSS-Co, Drills	47
Microcentrifuge Tubes	665
Micromag Filters	677
Micrometer Anvils	647
Heads	651
Heads, Digital	629
Setting Standards, External	641
Stands	628, 641
Micrometers, Depth	638
Digital, Depth	638
External	639 - 643
External, Blade	649
External, Digital	628 - 629, 645 - 646, 654
External, Disc	646
External, Interchangeable Anvils	644 - 645, 648
External, Point	647 - 648
External, Screw Thread	647
External, Spline	648
External, Tubular	629, 646, 649
External, U-Type	648
External, Wire	649
Internal	637, 650 - 651
Internal, Digital	630
Internal, Groove	650
Internal, Tubular	651
Microscopes	614
Microwave Ovens	1323
Milled Tooth Hand Files	100
Milling Chucks, Tru-Lock	298
Cutter Sets	147
Cutters, Indexable	276 - 280, 283, 285 - 286
Cutters, Multi Tooth	567 - 568
Cutters, Replaceable Head	284
Cutters, Throwaway	154 - 155
Inserts	226 - 231, 274 - 279, 283, 285 - 289
and Drilling Machines	441, 446 - 447
Mirrors, Inspection	858
Mirrors, Security	1369
Mitre Blocks and Boxes	535, 1118
Saws, Electric	479, 534 - 535
Squares	1129
Mixer Valves, Coolant	1282
Mixer, Cement	414
Mixers, Paint and Plaster	414, 513, 822
Mobile Tool Workshop	1092
Modular Counterbore System	308 - 320
Monkey Tail Door Bolts	1552
Mop Buckets	1505
Mops	1499, 1501, 1504
Morse Taper Drill Sleeves	764
Extension Sockets	764
Turret Sockets	764
Mortar Raker	824
Mortice Gauges	1128
Morticing Machines Electric	450
Motor Speed Controllers	1214
Motors, Electric	1215 - 1216
Mould Release Sprays	1262
Mounted Points	390 - 391, 483
Mounting Compound, Machine	1224
Mouse Mat	1332 - 1333
Mouse, Computer	1332
Multi Master Milling Kit	273
Multi Tooth, Milling Cutters	567 - 568
Multi-Angle Vices	837
Multi-Function Tools	969, 1103
Multi-Purpose Drill Sets	56, 515
Multi-Purpose Vices	751
Multi-Tool, DIY	479
Multi-Tools & Engravers	482 - 483, 505
Multi-Tooth Cutters	568
Multimeter Test Leads/Probes	842, 844
Multimeters	606, 840 - 845, 847
Multipliers, Torque	940

N

Nail Gun Gas Cartridges	536
Guns, Air Tool	536
Pouches	1076
Pullers	814
Punches	854, 1125
Nailers, Electric	481
Nails, Round Wire	1175
Neckwarmers	1719
Needle Scaler, Air	428
Needle, Hand Files	98
Netlon	1580
Never-Seez	1265
Nibblers, Air	429
Electric	537
Sheet Metal	1069
Nippers, Diagonal Cutting	954 - 955
End Cutting	955
Miniature	959
Nipples, Grease	936
Nitrile Gloves	1651, 1663, 1666, 1668 - 1672
Non-Safety Footwear	1732
Non-Sparking Safety Tools	980, 996 - 999
Notebooks	1341, 1384 - 1385
Notes, Repositional	1387
Noticeboards	1392
Nozzles, Cutting, Welders	1458 - 1461, 1467
Heating	1461
Welding	1461, 1467
Nuisance Masks	1600
Number Punch Units	971
Nut Spinners	947
Nut Splitters	797
Nut, Rivet	1178
Nut, Rivet Inserter	547, 974
Nuts, Dome	1178
Hexagon	1158, 1160, 1177 - 1178
Lock	1178
Nylc	1158, 1177 - 1178
Wing	1177 - 1178
Nylon Faced Hammers	888 - 890
Hoses	400 - 401
Tubings	400 - 401

O

O-Clip Pincers	1516
O-Clips	1516
O-Ring Cords	1243, 1251
O-Ring Fasteners	1161
O-Rings, Nitrile	1250 - 1251
OHP Pens	1424, 1431
Odour Neutraliser	1319
Office Accessories	1364
Offset Handles, Square Drive	1029, 1033
Offset Pipe Wrenches	1064 - 1065
Oil Absorbent Granules	1291
Cans	930
Dispensers	932
Drainer	933
Drip Trays	932
Filled Radiator	1388
Filter Removers	798, 1017
Measures	928
Spill Control	1288 - 1297
Oilers, Airline	408, 547
Oilers, Bottles	930
Oils, Air Lube	408, 1259
Engine	1277
Multi Purpose	1258 - 1260
Oilstones	392 - 395, 1079
Olives, Compression Fitting	577
Open Ended Spanners	483, 904, 1014 - 1016
Optical Equipment	610, 652
Orbital Sanders, Air	432 - 434
Orbital Sanders, Electric	479, 541
Organisers, Personal	1328
Organisers, Work	1331
Oven Cleaners	1314
Overhead Projector Pens	1424, 1431
Overshoes	1724
Oversleeves	1724
Oxy/Acetylene Welding	1458 - 1459, 1461 - 1463
Oxy/Propane Hoses	1462

P

P-Clips	1516
PCB Drills, Carbide	47
PTFE Sprays	1260
Tapes	577, 1234, 1798
Tubings	400
Packaging Materials	1397, 1399 - 1402
Packaging, Foam Rolls	1403
Packing Extractors	1252
Packing List Envelopes	1397
Padded Bags	1398 - 1399
Padlocks	1369, 1547, 1554 - 1559, 1563 - 1564
Pads, Elbow Protection	1683
Flip Chart	1392
Record	1385 - 1386
Writing	1341, 1384 - 1385
Padsaws	922, 1118
Paint Brush Cleaner	1308
Brushes	894, 1500
Kettles	896 - 897
Markers	1275 - 1276
Pads	897
Primers	1238 - 1240
Rollers	896 - 898
Scrapers	892
Thinners	1308
and Plaster Mixers	414, 513, 822
Paint, Stain Blocker	1239
Paints, Cold Galvanising	1238

Paints, Enamel	1240
Floor	1237
Fluorescent	1241
Food Industry	1231
Hammer Finish	1240
Hard Hat	1240
Heat Resistant	1241
Metallic	1240 - 1241
Miscellaneous	1239 - 1241
Radiator	1240
Spray	1238, 1240
Palette Knives	893
Pallet Stackers	1804, 1807
Pallet Trucks	1804 - 1806
Pan Fibre Gland Packing	1252
Panel Beating Tools	780
Panic Bolts	1544
Paper Clips	1342
Fasteners	1342 - 1343
Shredders	1380 - 1381
Towels and Wipes	1568 - 1577
Paper, Copier and Printer	1338 - 1340
Corrugated	1400
Listing	1340
Wrapping	1399
Parallels, Granite	601
Parallels, Steel	661
Partial Profile, Indexable Vertical Threading Inserts	262
Parting & Grooving Inserts, Indexable	271 - 272
Parting Blades, Indexable	270 - 271
Parts Storage	1072 - 1075
Parts Washers	799, 1254 - 1255
Paste Tables	895
Patio/Path Cleaners	1312
Pedestal Drawer Units	709, 1073, 1357, 1359
Pedestal Drills	442, 444 - 445
Pedestrian Sweepers	473
Peek, General Purpose Polish	1267
Pencil Leads	1425
Pencil Sharpeners	1433
Pencils	1424 - 1425
Pencils, Chinagraph	1424
Penetrating Fluids	1259 - 1261
Pens	1426 - 1430
Pens, Fibre Tip	1420, 1430
Highlighter	1420
Marker	1421 - 1423, 1783
Overhead Projector	1424, 1431
Perforated Panel Accessories	692 - 693
Perforated Panel Storage System	690, 692 - 693, 705, 715
Personal Organisers	1328
Petri Dishes	663
Petrol Cans	810
Plate Compactor	414
Power Tools	465
Pick Axes	875
Pick-Up Tools	860
Pick-Up Tools, Magnetic	937 - 938
Picks and Hooks, Engineers	854
Piercing Saws & Blades	922
Pillar Drills	442, 444 - 445
Pilot Cases	1328
Pin Chucks	861
Punches	815, 854 - 855
Spanners	548
Vices	861
Pincers, Carpenters	960
Pincers, O-Clip	1516
Pins, Clevis	1161
Map/Push/Indicator	1343
Selloc	1183
Pinzbohr	339 - 343
Pipe Bending Tools	1056 - 1057
Clips, Speedfit	578
Cutters	1058 - 1059
Deburrers	1059
Flaring Tools	1060
Freezer	1262
Maintenance Tools	1062
Roller Stands	1067
Sealants	1234
Threader	1062
Vices	1063
Wrenches	1064 - 1065
Wrenches, Aluminium	1064
Pipette Fillers	669
Pipettes	665, 668
Piston Ring Compressors	790
Plane Irons	561, 1121
Planers, Electric	450, 475, 543
Planes, Block	1120 - 1121
Fore	1121
Jack	1120
Rebate	1122
Smoothing	1120 - 1121
Planishing Hammers	886
Plant Ties	1787
Plasma Cutters	1455 - 1456
Plaster and Paint Mixers	414, 513, 822
Plasterboard Tape	1797
Plasterers Bath	822
Hawks	822
Trowels	823
Plastering Tools	821 - 822, 1796
Plasters and Dressings, Medical	1819, 1821 - 1823
Plastic Faced Hammers	888 - 890
Padding	1271
Rules	1434
Storage Boxes	1327
Plasticine	1579
Plate Compactor, Petrol	414
Plate Drags, Magnetic	937
Platform Steps	1518, 1520 - 1521, 1525, 1528
Towers	1528 - 1529
Trolleys	1801 - 1802

Plier and Screwdriver Set, Insulated	1105
Pliers, VDE Tested	905, 952 - 953
Bent Nose, Electronic	958
Circlip®	809, 956 - 957
Combination	950 - 951
Crimping	826, 828
Diagonal Cutter, Electronic	958
Diagonal Cutting	954 - 955
Electronics	958, 961
End Cutting	955
End Cutting Electronic	958
Fencing	960
Flat Nose	949, 953
Flat Nose Electronic	958
Gas	960
Glass	960
Glow Plug	809
Hose Clip	786 - 787
Linesmans	950
Locking	964 - 968
Long Nose	952 - 953, 958
Micro Nippers	959
Miniature	960
Nut	951
Oil Filter	798
Piston Ring	790
Pointed Nose Electronic	958
Pro-Torq	948 - 949, 951 - 955, 963
Revolving Punch	960
Round Nose Electronic	958
Sets	948
Sheet Metal	948
Slip Joint	950, 962
Snipe Nose	949, 952 - 953
Stainless Steel	958
Tile Cutting	900
Water Pump	962 - 963
Wire Stripping	830 - 831, 949
Wire Twisting	960
Plug Adaptors	551
Plugs, 3 Pin, 240V	551
Site	554
Taper Pressure	1183
Plumb Bobs	824
Plumbers Mate	1058
Plunger Type, Dial Test Indicators	591 - 594
Plungers, Sink	1054
Plungers, Toilet	1054
Plus Gas "A" Fluid	1259
Pneumatic Cylinders and Valves	575, 581 - 584
Fittings	570 - 576
Silencer	576
Solenoid Valves	583 - 584
Pocket Comparators	610
Knives	911
Magnifiers	610 - 611
Pockets, Document	1349, 1352 - 1353, 1783
Pole Sander	821
Polish Remover	1318
Polish, General Purpose, Peek	1267
Polisher-Sanders, Electric, Disc	543
Polishes	1314, 1318
Polishing Bonnets	549
Compounds	386, 389
Mops	386, 388
Rolls	379
Polo Shirts	1710 - 1711, 1716
Polypropylene Sacks	1399, 1509
Polystyrene Packing Chips	1400
Polythene Bags	1401
Packaging	1401
Sheets	1402
Polyurethane Hose	401
Pop Rivets	975
Portable Hardness Tester	599
Portable Workbenches	698 - 699
Post-It Index	1387
Post-It Notes	1387
Post/Suggestion Boxes	1371, 1391
Postal Tubes	1397
Posters	48
Posts, Folding	1811
Pouches, Nail	1076 - 1077
Power Pulls, Wire Rope	1531
Tool Chisels	519, 569
Tool Spares	430, 736 - 737
Tool Tidy	1089
Tools, Petrol	465
Powerlock Tapes	909
Precision Hand Files	97
Knives	916 - 917
Tool Sets	642
Presentation Accessories	1332, 1391
Presentation Binding Covers	1383
Presses, Hydraulic	783
Pressure Plugs	1183
Sprayers	876, 878 - 879
Switch	582
Testing	603, 605, 1061
Washers	460 - 465
Primers & Activators, Adhesive	1243
Primers, Paint	1238 - 1240
Printer Cartridges, Inkjet	1409 - 1415
Cartridges, Laser	1409 - 1410, 1414 - 1415
Labels	1375
and Copier Paper	1338 - 1340
Pritt Sticks	481, 1344
Propane Heaters	560
Welding Equipment	1463
and Butane Gas Equipment	832 - 835, 1438 - 1441
Protective Clothing Dispensers	1665
Protective Sleeving	1580
Protractors, Bevel	615
Pruning Shears	866
Pry Bars	814 - 815

Pull Studs	291
Puller, Injection Pump	808
Pullers, Hydraulic	797, 804 - 805
Pullers, Mechanical	781, 800 - 803, 805
Pulley Alignment Tools	1203, 1205
Pulleys	1217, 1789
Pumps, Coolant Sump Emptier	1282
Grease	930, 933
Lever	929
Oil/Fuel	929
Rotary	929, 932
Syphon	929
Water	487
Punches, Centre	854
Hole	972
Hollow	856
Nail	854, 1125
Pin	815, 854 - 855
Taper	855
Whitney	972
Punners	875
Push Pins	1343
Push-On Fasteners	1161
Push/Pull Tapes	909
Putty Knives	893

Q

Q-Max Cutters	856
Quick Change Discs	361
Change, Toolposts and Toolholders	754 - 755
Grip Clamps	925 - 926
Metal	1227
Quick-Vice™	441

R

RCD Sockets	550
RSI and Impact Protection	1675, 1682 - 1683
RTD Cutting Fluids	1272
Rack Clamps	718
Racking, Industrial	694 - 695
Radiator Enamel Paints	1240
Keys	1052, 1066
Repair Products	1269
Radiator, Oil Filled	1388
Radio, Portable	509
Radios, Two Way	1408
Radius Gauges	852
Radweld	1269
Rafters Squares	1129
Rail Industry Workwear	1690 - 1691
Rakes, Asphalt	875
Garden	864 - 865
Tarmac	875
Ram, Hydraulic	1530
Ramps, Portable Access	1776
Rangefinders	817, 907
Rasps, Hand Files	100
Ratchet Repair Kits	942, 1021, 1026, 1033
Spanners	1000, 1002 - 1005, 1009 - 1010
Wrenches, Square Drive	905, 1018, 1021, 1026 - 1027, 1033 - 1034
Ratchets, Air	436 - 437
Ratio Drills, Carbide	93
Rawhide Hammers	890
Reamer Blades, Adjustable Hand, HSS	157
Reamers, Hand, Straight Shank	156 - 157
Straight Shank, Socket	157
Taper Pin	156
Taper Shank, Socket	159
Reamers, Machine, Chucking	159 - 161
Straight Shank	160
Taper Shank	158
Taper Shank, Bridge	159
Taper Shank, Expanding	159
Rebate Planes	1122
Reception Seating	1361
Rechargeable Batteries	1490
Rechargeable Battery Chargers	1490
Reciprocating Saws, Electric	478, 538
Record Books and Pads	1385 - 1386
Record Cards	1386
Recorders, Time	1331
Redex	1269
Reducers, Speedfit	578
Reference/Data Books	1435
Refill Pads	1341, 1384 - 1385
Refractometers	652
Refrigerators	1323
Refrigerators, Drink	1325
Refuse Sacks	662, 880, 1509
Reinforcement Rings	1343
Remover, Polish	1318
Repair Kits, Hydraulic	783, 1530
Repair Products, Engineering	1223, 1226 - 1227
Replaceable Milling Head Cutters	284
Repositional Notes	1387
Rescuade Protection Pack	1820, 1822
Respirator Filter Cartridges	1610 - 1615, 1619
Respirators, Air Fed	1616 - 1619
Respiratory Protection	1600 - 1619
Protection, Full Face Masks	1613 - 1615
Protection, Half Face Masks	1610 - 1612, 1615, 1618 - 1619
Retainers, Bearings	1196
Reticle Magnifying	610
Retracting Key Reels	1369
Reusable Barrier Systems	1815
Reviver, Grout	1246
Revolving Centres	765 - 767
Revolving Punch Pliers	960
Riddle, Wire Mesh	867
Riffler, Diemakers Files	99
Rigger Boots	1729 - 1731
Ring Binders	1347 - 1348
Ring Spanners	904, 1009 - 1011
Ring-Main, Air Fittings	580

Rings, Reinforcement	1343
Ripper Cutters, Carbide	150
Ripper Cutters, HSS	121 - 123, 130 - 132, 145 - 146
Risers	1334, 1341
Rivet Nut	1178
Rivet Nut Inserter	547, 974
Riveters, Air	430
Lazy Tongue	975
Long Arm	975
Riveting Tools	974 - 975
Rivets, Pop	975
Road Measuring Wheels	910
Rods, Brazing	1484
Drain	1054 - 1055
Welding	1484 - 1485
Roller Ball Pens	1426 - 1428, 1430
Bearings, Spherical	1200
Bearings, Tapered	1203
Cabinet Spares	1093, 1097 - 1098
Cabinets	686, 702, 1093, 1096 - 1097, 1099, 1101 - 1102
Chain	1210 - 1211
Chain Connecting Link	1210
Crowbars	1803
Stands	1067
Rollers, Paint	896 - 898
Rolling Workshop	1092
Roof Rack bars, Car	810
Rope Hooks	1789
Rope and Chain Fittings	1786, 1788 - 1789, 1804
Ropes, Nylon	1785
Polypropylene	1785
Steel Wire	1533
Towing	810
Rose Countersinks, HSS	42
Rotary Coolant Adaptors	335
Drill, Electric	512 - 513
Pumps	929, 932
Shaft Seals	1252
Tables and Indexing Units	735
Round Wire Nails	1175
Router Cutters	562 - 566
Routers	475
Routers, Electric	539
Rubber Bands	1343
Gloves	1664 - 1665
Hammers	889
Rules, Aluminium	851
Brass Measuring	851
Folding	1129
Plastic	1434
Steel	850 - 851
Rust Preventatives	1258, 1260 - 1262, 1270, 1281, 1797

S

SD Memory Cards	1337
SDS-Max, Hammer Drill Bits	519
SDS-Plus Hammer Drill Bits	109, 517
SPC Connecting Cable	624
SPC Equipment	631
STD Cutting Compounds	1272
STD Cutting Fluids	1272
Sabre Saw Blades	378
Sabre Saws	538
Sack Ties	1399
Sack Trucks	1800 - 1802
Sacks, Polypropylene	1399, 1509
Safes, Fireproof	1371
Safes, Security	1371
Safety Cans, Fire	1510
Clogs	1759
Eyeshields	1621 - 1622
Eyewear	1470 - 1472, 1583, 1621 - 1637
Footwear	1730 - 1759
Helmet Accessories	1582 - 1583, 1595
Helmets	1581 - 1587
Matting	1537 - 1543, 1776
Shields, Laboratory	669
Signs	1500, 1507, 1761, 1763 - 1771, 1781, 1815
Sander, Pole	821
Sanders, Air	432 - 434
Belt, Electric	448, 542
Electric	479, 540 - 543
Orbital, Electric	479, 541
Sanders-Polishers, Electric	543
Sanding Bands	358, 483
Belts	356 - 357
Discs	350 - 355, 360 - 361, 366 - 367, 381 - 385, 483, 548
Drum Holders	358, 483
Pads	346, 547
Sheets, Velcro Backed	354
Sponges	349, 379
Sticks	356
Sanitisers, Cleaning	1302, 1315
Sapphire Greases	1284 - 1285
Sash Clamps	923
Locks	1546
Tools	899, 1500
Saw Blades, Circular, HSS	162 - 163
Diamond	546
Tile	477, 922
Saw Drills	1127
Horse	1117
Stands	535
Tooth Setters	1119
Saws & Blades, Piercing	922
Saws, Air	429
Bandsaw Machines	451 - 453
Bow	869
Chain	485
Circular, Electric	478, 526 - 527
Compass	1118
Coping	102, 922, 1118
Cordless	488 - 491, 495 - 496, 502
Cut-off	480, 528
Dovetail	1119

Saws, Drywall	1118
Floorboard	1119
Flush Cutting	1119
Fret	102, 922, 1118
General Purpose	1118
Gents	1119
Hand	1116 - 1117
Jigsaws, Electric	478, 532 - 533
Masonry	1118
Pad	922, 1118
Piercing	922
Plasterboard	1118
Power Hacksaw	454
Pruning	868
Sabre	538
Slitting	162 - 163
Staggered Tooth Side Chip	163
Straight Tooth Side Chip	163
Tenon	1119
Saws, Mitre, Electric	479, 534 - 535
Scaffold Towers	1528 - 1529
Scaffolding Spanners	1001
Scaffolding Tags	1772
Scale Units, Digital	627
Scissor Jacks	795
Scissor Tables	1806 - 1807
Scissors	902 - 903
Scoops, Hand, Food	1506
Scotch Tapes	1794, 1798
Scourers	1314, 1502
Scrapers	808, 892, 1123
Scrapers, Cabinet	1123
Engineers	861
Floor	875, 1499
Food	1506
Mechanics	808
Paint	892
Window	892
Scratch Brushes, Wire	483, 1498
Screen Filters	1334
Wash	1269
wipes, Computer	1310, 1335
Screw Drills, Carbide	164
Extractors	164
Fixings	1157, 1175, 1185 - 1186
Gauges	852
Plug Gauges, Double Ended	657
Plug Gauges, Single Ended	656
Ring Gauges	658
Screwdriver Bit Handles	988
Bit Holders, Hex Drive	1019
Bits	506, 517, 988 - 994
and Plier Set, Insulated	1105
Screwdrivers, Air	435
Cordless	475, 500, 507
Electric	544
Fatmax	976
Hand	976 - 985, 988, 990
Impact	995
Mechanics	984
Precision	986 - 987
Pro-Torq	976
Torque	941
Screwlock	1244
Screws, Dry Wall	1175
Hex Head Set	1168, 1171 - 1174
Machine	1176
Self Tapping	1157, 1174
Socket Head Button	1154 - 1155, 1176
Socket Head Cap	1138 - 1146, 1159
Socket Head Countersunk	1151 - 1153
Socket Head Shoulder	1156
Socket Set	1147 - 1150, 1171 - 1173
Wood	1174 - 1175
Scribers	860
Scroll Saws, Electric	451
Scrubbers, Floor	473
Scutch Hammers	884
Scythes	871
Seal Puller Tools	808
Seal Repair Kits, Hydraulic	783, 1530
Sealant Activators	1234
Sealant Guns	1231
Sealants	577, 1225, 1231 - 1236, 1271, 1798
Seals, Rotary Shaft	1252
Seam Rollers	893
Seat Covers, Car	1579
Seating, Reception Chairs	1361
Secateurs	866
Secondary Containment Storage	1288 - 1291
Security Badge Accessories	1368
Badges	1368
Mirrors	1369
Self Adhesives Labels	1374, 1376 - 1377, 1773, 1782
Aligning Ball Bearings	1191 - 1192, 1194
Tapping Screws	1157, 1174
Selloc Pins	1183
Sellotape	1798
Separators, Ball Joint	806
Separators, Chain	1053
Service Cases	1074 - 1075
Service Valves, Speedfit	578 - 579
Setting-in Sticks	886
Shackles, Bow	1790
Shackles, Dee	1790
Shaft Repair Sleeves	1252
Shakeproof Washers	1179
Shank Adaptors	301, 739
Sharpening Tools	396, 483
Sharps Disposal Containers	1822
Shavehooks	893
Shears and Snips	505, 831, 1068 - 1070
Shears, Air	429
Bench	760
Electronic	537, 961

Shears, Grass	866 - 867
Hedge	867
Pruning	866
Sheet Metal Nibblers	1069
Metal Tools	761, 886, 1069
and Tube Drills	41
Shelf Brackets	1549
Shelves, Storage	694 - 695
Shim, Brass	1779
Plastic	1779
Steel	1778 - 1779
Shirt Transfers	1340
Shirts, Workwear	1713, 1715
Shoe Knives	893
Shoes, Safety	1748 - 1759
Shorts, Workwear	1715
Shoulder Screws, Socket Head	1156
Shovels	872 - 874, 1499, 1505
Shovels, Hand	1499, 1506
Shovels, Snow	875
Showers, Drench	1823
Shredders, Garden	485
Shredders, Paper	1380 - 1381
Shrink Guns	1403
Shrinkwrap Material	1403
Side And Face Cutters, Straight Tooth	110
Chip Saws, Staggered Tooth	163
Plates, Wire Wheels	585
and Face Cutters, Staggered Tooth	110
Sidelock Adaptors	292, 295, 299
Signs, Floor	1780 - 1782
Signs, Safety	1500, 1507, 1761, 1763 - 1771, 1781, 1815
Silencer, Pneumatic	576
Silica Gel	1397
Silicon Carbide Paper	348
Silicone Sealants	1231 - 1232
Silver Steel	734
Sine Tables, Magnetic	676
Sink Plungers	1054
Site Lights	554 - 556
Sisal String	1785
Skin Conditioning Creams	1307
Slashers	871
Slat Chain	1212
Sledge Hammers	885
Sleeving, Protective	1580
Slideway Lubricants	1281
Sliding Bevels	1129
Slings, Lifting	1532
Slip Gauges	653
Slitting Saw Arbors	292
Slitting Saws	162 - 163
Slogging Open End Wrenches	1000 - 1001
Slogging Ring Wrenches	1000
Slot Drills, Carbide	121, 124 - 131, 133, 136, 138 - 146, 148 - 151
HSS	112 - 115, 118 - 120, 124
HSS, Ball Nosed, Screwed Shank, Long Series	115
HSS, Ball Nosed, Screwed Shank, Short Series	115
HSS, Screwed Shank, Long Series	114
HSS, Screwed Shank, Short Series	112
HSS-Co, Screwed Shank, Long Series	119
Screwed Shank, Long Series	114, 118
Screwed Shank, Regular Series	119
Screwed Shank, Short Series	112, 119
Smoke Detectors	1230
Smoking Bins	1507
Smoothing Planes	1120 - 1121
Smoothrite Paints	1240
Snap Off Knives & Blades	914 - 915
Snips and Shears	505, 831, 1068 - 1070
Snips, Metal Cutting	1068 - 1070
Snow Shovels	875
Soap & Hand Cleanser Dispensers	1298 - 1300, 1302 - 1306, 1308
Soaps, Hand	1298 - 1301, 1303 - 1309, 1512
Socket Accessories, Go-Through	1003
Hand, 1/2 Sq Drive	1027
Hand, 3/8 Sq Drive	1021, 1023
Socket Button Head, Screws	1154 - 1155, 1176
Cleaners, Tool	291, 715
Hand Reamers, Taper Shank	159
Head, Cap Screws	1138 - 1146, 1159
Head, Shoulder Screws	1156
Rails & Clips	1035
Reamers, Hand, Straight Shank	157
Screws, Button Head	1154 - 1155, 1176
Screws, Cap Head	1138 - 1146, 1159
Screws, Countersunk Head	1151 - 1153
Set Cases	1039 - 1044
Set Screws	1147 - 1150, 1171 - 1173
Sets	1016, 1029, 1036 - 1045
Sockets & Accessories, Square Drive	905, 1016, 1018 - 1034
Sockets, Electrical	551, 553
Sockets, Go-Through	1003
Socks	1718
Soft Starter, Electric Motor	1214
Soldering Accessories	836 - 839
Irons	832 - 833, 835 - 836
Stands	837
Stations	837
Tips	835 - 838
Tools	832 - 839
Solders	839
Solenoid Valves, Pneumatic	583 - 584
Solid Centres	765
Solvents	1257
Sonoscopes	793
Sound Level Meters	606, 1588
Space Heaters	558, 560
Spacers, Arbor	292, 292
Spades, Garden	862, 864
Spanner, Pump Nut	1054
Spanners, Black	1000
Box	1002
Box - Tommy Bars	1002
C-Hook	297 - 298, 1001, 1017

Spanners, Combination	1003 - 1008
Compression Nut	1054
Flared Nut Ring	1012
Hub	808
Ignition/Miniature	1016
Immersion Heater	1052
Obstruction	904, 1011
Open Ended	483, 904, 1014 - 1016
Pin	548
Podger	1000
Radiator	1052, 1066
Ratchet	1000, 1002 - 1005, 1009 - 1010
Ring	904, 1009 - 1011
Ring - Torx	1013
Scaffolding	1001
Slogging	1000 - 1001
Spares, Indexable Drills	220
Indexable Spot Drills	282
Power Tools	430, 736 - 737
Toolholder	206 - 223, 260, 277 - 280, 287 - 288
Spark Igniters, Gas	1403
Spark Resistant Safety Tools	980, 996 - 999
Spatter Release Sprays	1263
Spectacles, Safety	1470, 1621 - 1630, 1632, 1635
Spectracolor	1273
Speed Braces, Square Drive	1022, 1028
Bumps	1811
Clamps	927
Controllers, Motor	1214
Wrenches	1065
Speedfit Barrier Pipes	579
Connectors	578
Elbows	578
Pipe Clips	578
Reducers	578
Service Valves	578 - 579
Stop Ends	578
Taps	579
Tees	578
Spherical Roller Bearings	1200 - 1201
Spill Control, Oil and Chemical	1288 - 1297
Spindle Bearings	1195
Spinner Handles, Square Drive	1018, 1022
Spire Clips	1160
Spirit Levels	654 - 655, 816, 818 - 820
Levels, Bench	655
Levels, Engineers	654 - 655
Levels, Machinists	655
Splicing Kit, Wire	777
Splitters, Nut	797
Spokeshaves	1122
Sponge Mops	1501
Sponges, Cleaning	895, 895, 1502, 1502 - 1503, 1503 - 1504
Spot Drills, Indexable	282
Spot Weld Removers	781
Spotting Drills, Carbide	46
Spotting Drills, HSS	46
Spray Cleaners, Foam	1259
Dispensers	930
Grease, Copper	1265
Guns, Air	410
Guns, Electric	477
Paints	1238, 1240
Sprayers, Garden Pressure	876, 878 - 879
Spring Calipers	849
Compressors	790
Dividers	849
Sprockets, Chain	1211
Spud Wrenches	1064
Squares, Combination	1129
Engineers	655, 849
Granite	601
Mitre	1129
Rafters	1129
Toolmakers	655, 849
Try	1129
Squeegees	1500
Stackers, Pallet	1804, 1807
Stag Joint Compound	1235 - 1236
Stag Kwikfill	1270
Staggered Tooth, Side and Face Cutters	110
Stain Blocker Paint	1239
Stain Removers	1311, 1316
Stainless Steel Bolts	1168 - 1169, 1169
Studding	1187
Wire Brushes	1498
Stales, Mop and Broom	1499, 1501, 1504
Stamp Ink pads	1366 - 1367
Stamps, Word and Date	1366 - 1367
Stands, Dial Gauge	633
Micrometer	628, 641
Sawing	535
Soldering	837
Staple Extractors	1405, 1407
Staplers	1404 - 1407
Staples	1404 - 1407
Static Workstations	706 - 707
Stationery Supplies	1434
Stations, Soldering	837
Steam Cleaners	473
Steel Balls	1195
Corner Braces	1552
Dowel Pins	1161, 1181 - 1182
Parallels	661
Plates	1552
Rules	850 - 851
Tee Plate	1552
Wool	1810
Steel, Shim	1778 - 1779
Steel, Silver	734
Stellite Drills	164
Stencils	973
Step Ladders	1518 - 1521, 1524, 1524 - 1525, 1528
Steps, Platform	1518, 1520 - 1521, 1525, 1528
Swingback	1520

Steps, Warehouse	1364, 1522 - 1523
Stethoscope, Mechanics	793
Stikfast Washers	1052
Stikit Discs	352 - 353
Stillson Pipe Wrenches	1064
Stockinette	1503
Stools	1365
Stop Ends, Speedfit	578
Stopcock Keys	1066
Stopwatches	608
Storage Bins, Euro Nesting	679
Bins, Plastic	678
Boxes, Cardboard	679
Boxes, Plastic	1327
Cases, CD's	1336
Containers	697, 702, 1089, 1091
Cupboard Fittings	685, 691
Cupboards	680 - 687, 690 - 691, 1359
Lockers	688 - 689
Shelves	694 - 695
System, Perforated Panel	690, 692 - 693, 705, 715
System, Tilt Box	713
Systems	690, 1091, 1341
Storage, CNC Tools	290 - 291, 714 - 715
Storage, Secondary Containment	1288 - 1291
Straight Edges, Engineers	849
Edges, Granite	601
Shank Hand Reamers	156 - 157
Tooth Side Chip Saws	163
Tooth, Side And Face Cutters	110
Strap Wrenches	798, 1017, 1053
Strapping Materials & Tools	1394 - 1396
Strapping and Carton Cutters	920
Straps, Cargo	1786 - 1787
Stretchwrap Film	1402
Stretchwrap Machines	1402
Strimmers, Petrol	486
String & Twine	1785
Strip, Feeler	853
Stripper Bolts	1156
Stroke Counters, Mechanical	608
Stronglock Tapes	908
Stub Drills, Carbide	52 - 53
Stub Drills, HSS	49 - 50, 53
Stud Extractors, Square Drive	1023, 1032
Sensors	848
Track Roller Bearings	1203
Studding Connector	1187
Studding, High Tensile	1187
Mild Steel	1187
Stainless Steel	1187
Studlock	1244 - 1245
Subject Dividers	1350
Suction Hoses	400
Pads	784
Valve Grinders	791
Suds Brushes	1500
Suggestion/Post Boxes	1371, 1391
Suitcases	1329
Sump Emptiers, Coolant	1282
Sun Block Lotion	1298
Superclean	1256
Support Props, Plastering	821
Surface Cleaners	1259, 1267, 1311 - 1312, 1314 - 1318
Conditioning Abrasives	360 - 361, 367, 380 - 385, 388, 483
Forming Tools	1123
Gauges	860
Plates, Cast Iron	660
Plates, Granite	601
Roughness Tester	600
Suspension Files	1351
Swabs	665
Sweatshirts	1710
Swedish Pipe Wrenches	1065
Sweepers, Pedestrian	473
Sweeping Mops	1499
Swing Bins	1417, 1507
Switch, Pressure	582
Switches, Electrical	553
Swivel Clips	1353
End Socket Wrenches	1013
Handles, Square Drive	1018, 1022, 1029, 1033
Syphon Pumps	929
Syringe Disposal Containers	1822

T

T Cards	1331
T-Handles, Square Drive	905, 1018, 1022, 1028, 1033 - 1034
T-Nuts, Lathe Chuck	770
T-Shirts	1710 - 1711, 1717
T-Slot Cutters	110
T-Slot Machine Clamping Sets	719 - 720
T-Type Socket Wrenches	1017
TA Drills, Indexable	323 - 331
TIG Welders	1452 - 1455
TIG Welding Equipment	1468
Tabards	1726
Tabbies, Key Rings	1369
Table Saws, Electric	451
Stretcher Steel Plate	1552
Top Slat Chain	1212
Tables, Folding	895, 1355
Lifting	1807
Paste	895
Wooden	1355, 1357
Tableware	1322
Tachograph Charts	1385
Tachometers	609, 846
Tackers, Electric	481
Tackers, Hand	1404 - 1405
Tacklifters	1125
Tagging Guns	1377
TagOut and Lockout Systems	1560 - 1563
Tags and Tickets	1369, 1377, 1760, 1773, 1781
Tags, Ladder	1772

Tags, Scaffold	1772
Treasury	1343
Tally Counters, Hand	608
Tan Vinyl Tapes	1793
Tank Cutters Adjustable	856, 1125
Tap Extractors	164
Reseating Tool	1061
Wrenches	859
and Drill Sets, HSS	66
Tape Dispensers	1791
Tape Measures	908 - 909
Taper Adaptors, ISO	294
Jacobs	294
Morse	292, 294
Taper Lock Bushes	1218
Pin, Hand Reamer	156
Pressure Plugs	1183
Punches	855
Shank Drills	86 - 90, 90
Shank Drills, Bushing	89
Shank Drills, HSS	86, 88, 90
Shanks, HSK Hollow	299
Tapered Roller Bearings	1203
Tapes, Adhesive	1798
Aluminium foil	1797
Barrier/Hazard	1775
Builders PVC	1796
Diameter	909
Double Sided	1794
Floor Marking	1776
Hazard Marking	1775
Identification	1774 - 1775, 1810
Industrial	821, 1793 - 1798, 1810
Insulation	1810
Invisible	1798
Labelling	1372 - 1373
Lo-Tac	1794
Locking	908 - 909
Long Measuring	910
Low Noise	1793
Magic	1794
Masking	1792
Medical	1822
PTFE	577, 1234, 1798
Packaging	1793 - 1795, 1798
Plasterboard	1797
Powerlock	909
Push/Pull	909
Scotch	1794, 1798
Stronglock	908
Tan Vinyl	1793
Waterproof	1796
Taping Knives	821
Tapping Adaptors	302 - 303
Attachments	739
Head Sets	301
Head, Clutch	301
Taps, Drum	931
HSS, Ground Flute	166 - 179
HSS, Left Hand	181
HSS, Machine	183, 185 - 193
Tarmac Rakes	875
Tarpaulins	1799
Tea Towels	1503
Urns	1322
and Coffee	1324 - 1325
Tee Plate	1552
Tees, Speedfit	578
Telephone & Address Books	1328
Sockets and Leads	1408
Wipes	1310, 1335
Telescopic Gauges	856
Telescopic Ladders	1527
Temaxol Cutting Compounds	1272
Temperature Controllers	673
Temperature Measurement	602 - 605, 608, 846, 1195
Tension/Size Gauges, Drive Belts	1207, 1209
Test Equipment	606, 609, 793, 841 - 848
Leads, Probes	842, 844
Tube Racks	669
Testers, Anti-Freeze	809
Battery	779, 1488
Circuit	777, 779, 829, 848
Continuity	777, 847
Vacuum and Fuel Pump	786, 788
Testing, Pressure	603, 605, 1061
Thermal Wear	1702, 1715
Thermometers	602 - 605, 608, 846, 1195
Thickness Gauges	618, 631
Gauges, Digital	631
Gauges, Ultrasonic	631
Thimblettes	1343
Thinners, Paint	1308
Thread Repair Inserting Tools	1165, 1167
Inserts	1164, 1166
Kits	1164 - 1165
Taps	1166 - 1167
Thread Restoring Files	40
Threaded Bar, High Tensile	1187
Mild Steel	1187
Stainless Steel	1187
Threaded Chuck Arbors	739
Threading Heads	1062
Inserts Vertical Partial Profile, Indexable	262
Inserts, Carbide	261 - 263, 336
Toolholders	260 - 261, 263
Threadlock	1244 - 1245
Threadmills, Indexable	332, 336
Throwaway Cutters, KC3	154 - 155
Thrust Bearings	1193
Tickets and Tags	1369, 1377, 1760, 1773, 1781
Ties, Cable	829, 1787
Garden	1787
Sack	1399
Tile & Glass Drills	108, 547

Tile Adhesives	1246
Cutting Machines	900 - 901
Cutting Machines, Electric	477
Cutting Pliers	900
Saw Blades	477, 922
Saws	922
Spacers	900
Tiling Grout	1246
Tilt Box Storage System	713
Time Recorder	1331
Timing Belts	1209
Timing Lights	807
Tinsnips	1068
Tips, Soldering	835 - 838
Tissues, Facial	1569
Toggle Clamp Spares	747
Clamps	741 - 749
Clamps, Hook	749
Clamps, Horizontal	749
Toilet Cleaners	1313
Plungers	1054
Roll Dispensers	1565 - 1567, 1569, 1578
Rolls and Tissues	1565 - 1567, 1572
Tommy Bars	1002
Tool Bags	504, 1080 - 1083
Belts	1076 - 1077
Blanks	293
Blocks	270
Boxes	697, 1087 - 1091
Boxes, Compact	1088
Cabinet Spares	1098
Cabinets	686, 702, 1093, 1096 - 1097, 1099, 1101 - 1102
Carriers	690, 1091, 1341
Cases	1083 - 1086, 1089 - 1090, 1130, 1132
Chest Spares	1093, 1097
Chests	1087, 1093, 1095 - 1099, 1101 - 1102
Control, Drawers and Inserts	1114 - 1115
Holsters	1076 - 1078
Kits	475, 497, 899, 981, 1053, 1104 - 1113, 1127, 1191
Organisers	1082
Pouches	1076 - 1078
Racks, Magnetic	937
Rolls	1079
Socket Cleaners	291, 715
Storage	697, 702, 1089, 1091
Trolleys	690, 1093
Toolbits, Cobalt and HSS	194 - 195
Toolholder Spares	206 - 223, 260, 277 - 280, 287 - 288
Toolholders, Grooving	267 - 268
Indexable	202 - 204, 206 - 216, 241, 249, 258 - 259
Knurling	194, 762
Threading	260 - 261, 263
VDI Radial and Axial	304 - 306
Toolmakers Clamps	861
Square	655, 849
Vices	752 - 753
Toolposts and Toolholders, Quick Change	754 - 755
Torches, Battery	497, 505, 793, 1492 - 1497
Torque Drivers	941
End Fittings	942, 945, 947
Handles	941, 945 - 946
Multipliers	940
Testers	940
Wrenches	941 - 946
Torx Ring Spanners	1013
Torx® Keys	1135
Towels and Wipes, Paper	1568 - 1577
Towers, Access	1528 - 1529
Towing Ropes	810
Track Roller Bearings	1203
Traffic Calming	1811
Traffic Cones	1813
Trailing Sockets	550 - 551
Trainers, Safety	1744, 1749 - 1751
Trammel Heads	1122
Tramp Oil Skimmers	1282
Transfers, T-shirt	1340
Transformers	554
Transmission Jacks	796
Transport Cases, Aluminium	697
Trapper Cap	1719
Trays, Magnetic	938, 1099
Trays, Oil Drip	932
Treasury Tags	1343
Treflex Cutting Compounds	1272
Trigger Spray Dispensers	930
Trim Pin Removers	781
Trimmers	1382, 1416
Trimmers, Electric, Laminated	537
Trimming Knives and Blades	912 - 913
Triplicate Books	1386
Trolley Cases	1329
Trolley Jacks	795 - 796
Trolleys, Block	1531
Gas Cylinder	1462
Platform	1801 - 1802
Tool	690, 1093
Trousers, Workwear	1708 - 1709, 1712 - 1715, 1727
Trowels, Adhesive	822 - 823
Builders	823, 825
Plasterers	823
Tru-Lock Milling Chucks	298
Trucks, Sack	1800 - 1802
Trucks, Turntable	1802
Try Squares	1129
Tube Cutters	1058
Tube Micrometers, Digital	630
Tubes, Centrifuge	664
Tubes, Mailing/Postal	1397
Tubings, PTFE	400
Tubs, Multi Purpose	822, 880, 895, 1091, 1500 - 1501
Tubular, Micrometers, Internal	651
Tufcut Liquids	1272
Turning Inserts	232 - 259
Toolholders	202 - 204, 206 - 216, 241, 249, 258 - 259

Turning Tools, Butt Welded	38
Turntable Trucks	1802
Turret Sockets, Morse Taper	764
Tweezers, Engineers	851, 905
Twine & String	1785
Typewriter Cartridges & Ribbons	1412, 1414 - 1416
Tyre Tools	408, 411, 811

U

USB Flash Drives	1336
USB Memory Sticks	1336
Ultracut Fluids	1279
Ultrasonic Degreasing Baths	1254
Ultrasonic Thickness Gauges	631
Universal Joints, Square Drive	1019, 1022, 1027, 1033
Urns, Tea	1322

V

V-Belts	1204, 1206 - 1209
VDI Radial and Axial Toolholders	304 - 306
VDI Tooling	304, 306 - 307
Vacuum Cleaners	466 - 472
Lifters	784
Testers	786, 788
and Fuel Pump Testers	786, 788
Valve Tools	790 - 791
Valves, Coolant Mixer	1282
Float	577
Pneumatic	575, 581 - 584
Varnishes/Lacquers	1241
Vee Blocks and Clamps	659
Vee Blocks, Granite	601
Velcro - Adhesive pads	1344
Velcro Discs	353 - 354
Vernier Calipers	620 - 621
Depth Gauges	621
Height Gauges	616
Vibration Hand Arm Labels	1760, 1762, 1769, 1773
Vice Jaws	750, 752, 1067
Vice and Workbench	698 - 699
Vices, Drill Press	442, 752 - 753
Engineers	750 - 751
Fitters	751
Machine	752 - 753
Mechanics	750
Multi-Angle	837
Multi-Purpose	751
Pin	861
Pipe	1063
Quick Type	441
Toolmakers	752 - 753
Woodworking	750
Workshop	751
Visitor Badges	1368
Visitors Coats	1727
Visor Accessories	1634
Visors, Face	1631, 1634
Voltage Detectors	829, 844, 848

W

WD40 Maintenance Liquid	1260
Walkie-Talkies	1408
Wall Charts	48
Clocks	1330
Plugs	1157, 1175, 1185 - 1186
Wallets, Document	1351, 1353
Wallpaper Strippers	477
Warehouse Coats	1720
Warning Labels, Vibration Hand Arm	1760, 1762, 1769, 1773
Warning Triangle	810
Warrington Hammers	884
Wash Bottles, Laboratory	667
Washers, Brass	1180
Coil Spring	1179
Copper	1159
Fibre	1159
Lock	1159
Plumber	1052
Shakeproof	1179
Stainless Steel	1180
Steel	1159, 1179
Stikfast	1052
Washing Powders	1316 - 1317
Washing Up Liquids	1317
Washroom Cleaners	1311, 1313
Waste Bins	1417, 1507
Waste Disposal Bags	662, 880, 1509
Watches, Stop	608
Water Baths	672
Drinking	1325
Hose Fittings and Accessories	877 - 879
Hoses	400 - 401, 877
Pumps, Submersible	487
Separators	408, 547
Water, De-ionised	1268
Watering Cans	876
Waterproof Tapes	1796
Waterproof Workwear	1706 - 1709, 1713
Waxoyl	1241
Wedge Belts	1205
Weed Control Fabric	881
Weeding Tools	867
Weighing Boats	664
Weighing Scales	1418 - 1419
Welders Angle Clamp	1465
Chipping Hammers	884
Face Shields	1470, 1635
Gauntlets	1474 - 1475, 1680 - 1681
Goggles	1470, 1635
Helmets	1470 - 1473, 1635 - 1637
Workwear	1476, 1719, 1723
Welders, Arc	1442 - 1445
Cutting Nozzles	1458 - 1461, 1467
MIG	1446 - 1448, 1450 - 1451

Welders, Plasma Cutters	1455 - 1456
TIG	1452 - 1455
Welding & Cutting, Gas	1457 - 1463
Accessories	839, 1438, 1445, 1460 - 1462, 1464 - 1467
Consumables	838 - 839, 1465 - 1467, 1469, 1479 - 1480, 1484
Electrodes	1481 - 1483
Equipment, TIG	1468
Helmets	1472, 1637
Hoses	1462
Inverters	1452 - 1455
Nozzles	1461, 1467
Rods	1484 - 1485
Welding, Cutting Attachments	1460
Flashback Arrestors	1463
Fume Extraction	1477
Gas Bottles	1440 - 1441, 1447
Gas Regulators	1447, 1463
MIG Equipment	1466 - 1467
Oxy/Acetylene	1458 - 1459, 1461 - 1463
Wellington Boots	1732
Wet Wipes, Hand	1309, 1512 - 1513
Wet or Dry Paper	348
Wheel Dressers, Diamond	771
Dressers, Huntington	771
Wrenches	810
Wheelbarrows	1803
Wheelie Bins	1508
Wheels, Castor	1428, 1534 - 1536
Wheels, Wire	585
Whetstones	396
White Board Cleaner & Wipes	1310, 1335, 1390
Whitney Punches	972
Wiggler Sets	857
Windcheater Hats	1719
Window Scrapers	892
Window Washers	1500
Windscreen Repair Tools	784
Wing Covers, Magnetic	809
Wing Nuts	1177 - 1178
Wipes, Multi-Purpose	1310, 1335
Alcohol Free	1822
Computer Screen	1310, 1335
Dispensers	1575 - 1576
Industrial	1309, 1511, 1513
Telephone	1310, 1335
White Board	1310, 1335, 1390
Workshop	1298, 1309, 1511 - 1513, 1568, 1570 - 1577
Wire Brushes	483, 1498
Cutters	955
Gauges	852
Rope	1533
Rope Grips	1790
Rope Hoists	1531
Rope Lifter	1531
Rope Spray	1264
Rope, Power Pulls	1531
Scratch Brushes	483, 1498
Strippers	830 - 831, 949
Twisting Pliers	960
Wheels	585
Wool	1810
Wire, MIG	1448, 1479 - 1480
Wood Chisels	1124 - 1125
Wood Screws	1174 - 1175
Wooden Tables	1355, 1357
Woodruff Cutters	111
Woodworking Vices	750
Word and Date Stamps	1366 - 1367
Work Benches and Cabinets	699 - 701, 703 - 706, 708, 710 - 711
Holding Fixture Components	721 - 731
Lights	554 - 557, 1812
Organisers	1331
Stands	1103
Workbench and Vice	698 - 699
Workshop Vices	751
Workstations, Static	706 - 707
Workwear	1476, 1690 - 1727
Wrapping Paper	1399
Wrecking Bars	814
Wrenches, Adjustable	774 - 776
Adjustable C-Hook	1017
Basin	1052
Chain	798, 1017, 1053, 1063
Crescent	904, 1011
Crowfoot	1016
Electric, Impact	531
Heavy Duty Pipe	1064 - 1065
Hexagon	1131 - 1134, 1146
Ignition/Miniature	1016
Leader Pattern	1064
Oil Filter	798, 1017
Pipe	1064 - 1065
Ratchet, Square Drive	905, 1018, 1021, 1026 - 1027, 1033 - 1034
Speed	1065
Spud	1064
Stillson	1064
Strap	798, 1017, 1053
Swivel End Socket	1013
T-Type	1017
Tap	859
Torque	941 - 946
Torx®	215 - 216, 219 - 221, 223, 260, 277 - 280, 340 - 341, 1135
Wheel	810
Wrist Rests	1333
Wrist Supports	1682, 1682
Writing Pads	1341, 1384 - 1385

Z

Z-Barriers	1815
Zipcut Spot Weld Remover	781